



Wai-O-Tapu, Rotorua

## Our Favourites

Enjoy a traditional hangi feast and Maori cultural performance

See remarkable thermal activity at Hell's Gate, Wai-O-Tapu or Whakarewarewa

Take the family to Rainbow Springs, Kiwi Encounter and the Agrodome

Walk amongst huge towering Californian redwoods in Whakarewarewa Forest

Catch the gondola to the top of Mount Ngongotaha and luge your way down

Rotorua is right up there with anyone's North Island highlights. Great fishing, fantastic scenery, incredible volcanoes and thermal activity are just the start of what makes the town so special.

Find your way around Rotorua by walking sections of the Rotorua Walkway. See geothermal areas, native wildlife and local historic sites on the route. But to get a true feel for Rotorua, find out more about the local Maori culture. Witness the local spirit when you take in a performance or seek out a Maori guide to show you around the incredible geothermal landscape. Master artists teach carving and weaving, while the traditional Maori hangi meal and cultural performances can't be missed.

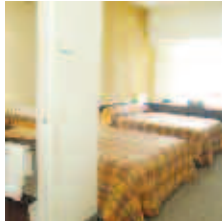
There are two sides to this town – the indulgent offerings that earn Rotorua its reputation as the spa of the Pacific, and the thrilling adventures around scenery of mountains, volcanoes, rivers and lakes. Nothing says rest and relaxation like a soak in the hot springs, massage or mud wrap. But there's plenty of time for that. Thrill seekers haven't got a minute to waste, with the rivers offering up the perfect opportunity for white water rafting. Everywhere you look, in fact, outdoor adventures await. Roll downhill inside a zorb, race a luge cart or take a flight over the active volcano of White Island. The summit of Mount Tarawera is the perfect spot for a hike around the crater's edge, while the Whakarewarewa Forest is a favourite for mountain bikers. Whichever way you look at it, you'll never be lost for something to do on your Rotorua holiday.

### FIND YOUR ACCOMMODATION

REF.	APARTMENTS	PAGE
9	Marama Resort Rotorua, Mourea ◆◆◆	35
REF.	HOTELS	PAGE
8	Distinction Rotorua ★★★★★	34
10	Amora Lake Resort Okawa Bay, Rotorua ★★★★★☆	36
2	Ibis Rotorua ★★★☆	34
6	Kingsgate Hotel Rotorua ★★★☆	34
1	Novotel Rotorua Lakeside ★★★★★☆	35
11	Peppers on the Point, Kawaha Point ★★★★★	36
5	Rydges Rotorua ★★★★★☆	35
16	Solitaire Lodge, Lake Tarawera ★★★★★	36
4	Sudima Hotel Lake Rotorua ★★★★★	34
13	Wai Ora Lakeside Spa Resort, Holdens Bay ◆◆◆◆	35
Other properties available		
14	Holiday Inn Rotorua ★★★★★☆	-
12	Kawaha Point Lodge, Rotorua ★★★★★	-
3	Millennium Hotel Rotorua ★★★★★☆	-
7	The Springs Luxury B&B ◆◆◆◆	-
15	Treetops Lodge, Rotorua ★★★★★	-



## Ibis Rotorua ★★☆☆



With an ideal location on the shores of Lake Rotorua, the hotel offers easy access to the city centre and attractions.

City Centre 450m  
Map page 33 Ref. 2

Lake End Rangiuru Street, Rotorua

### PROPERTY FEATURES:

- 24 hour reception
- Restaurant ▪ Bar
- Internet access (wireless)
- Guest laundry
- Parking (undercover)

### ACCOMMODATION FEATURES:

- Air-conditioning
- Tea/coffee making facilities
- In-room movies (pay to view)
- Ironing facilities
- Hair dryer

Room serviced daily



From **\$90** PER ROOM PER NIGHT\*

1 APR – 8 SEP, 12 SEP, 16 – 22 SEP, 26 – 30 SEP 11	ADULTS	1 NT	3 NTS	5 NTS
Standard	1 to 2	90	268	446
Lake View	1 to 2	113	338	564
1 – 13 OCT, 17 – 19 OCT, 24 OCT 11 – 31 MAR 12	ADULTS	1 NT	3 NTS	5 NTS
Standard	1 to 2	132	395	658
Lake View	1 to 2	153	457	761

Other prices apply for Rugby World Cup.

**Children** 0 to 11 years – 1 child free when sharing with an adult and using existing bedding.

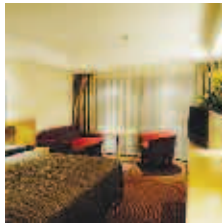
**Max capacity** 3 adults or 2 adults/2 children.

**IBIROT**

### TRAVELPOINT BONUS

FREE buffet breakfast for 2 adults daily for stays of 3 nights or more in a Lake View room, valid 1 Apr – 24 Aug 11.

## Kingsgate Hotel Rotorua ★★☆☆



Situated midway between the famous Pohutu Geyser and the city centre, perfectly located to experience all the region has to offer.

City Centre 2.4km  
Map page 33 Ref. 6

328-348 Fenton Street, Rotorua

### PROPERTY FEATURES:

- 24 hour reception
- Restaurant ▪ Bar
- Room service (24 hour)
- Tennis court
- Fitness centre ▪ Barbecue area
- Pool (heated outdoor) ▪ Spa ▪ Sauna
- Children's playground
- Non smoking
- Internet access (wireless)
- Parking
- Laundry/dry cleaning service

### ACCOMMODATION FEATURES:

- Balcony
- Tea/coffee making facilities
- Air-conditioning (Superior rooms)
- Fan
- Ironing facilities
- Hair dryer

Room serviced daily



From **\$87** PER ROOM PER NIGHT\*

1 APR – 9 SEP, 11 – 13 SEP, 15 – 24 SEP, 26 – 30 SEP 11 <sup>^</sup>	ADULTS	1 NT	3 NTS	5 NTS
Standard	1 to 2	116	346	576
Superior	1 to 2	127	381	635
1 – 30 NOV 11, 1 FEB – 31 MAR 12	ADULTS	1 NT	3 NTS	5 NTS
Standard	1 to 2	134	400	666
Superior	1 to 2	157	471	784

Other prices apply 26 – 30 Oct, 1 Dec 11 – 31 Jan 12 and for Rugby World Cup.

**Children** 0 to 13 years – free when sharing with an adult and using existing bedding. Cot free of charge.

**Max capacity** 3.

**KINROT**

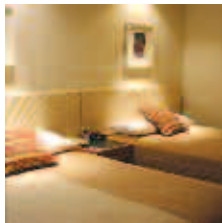
### TRAVELPOINT BONUS

<sup>^</sup> FREE Night Offer: Stay 4 nights, pay for 3.

FREE breakfast for 2 adults daily for stays of 3 nights or more.

Offers not combinable.

## Sudima Hotel Lake Rotorua ★★☆☆



Rotorua's largest hotel located adjacent to the Polynesian Spa and Energy Events Centre, with views of Lake Rotorua from many rooms.

City Centre 1km  
Map page 33 Ref. 4

1000 Eruera Street, Rotorua

### PROPERTY FEATURES:

- 24 hour reception
- Restaurant ▪ Bar
- Room service (24 hour)
- Hairdresser
- Pool ▪ Spa
- Internet access (wireless)
- Internet facilities
- Guest laundry
- Lift
- Parking
- Non smoking

### ACCOMMODATION FEATURES:

- Fan
- Tea/coffee making facilities
- Refrigerator
- Cable TV
- Internet access (broadband and wireless)
- Ironing facilities
- Safe
- Hair dryer

Room serviced daily



From **\$109** PER ROOM PER NIGHT\*

1 APR – 4 SEP 11	ADULTS	1 NT	3 NTS	5 NTS
Standard	1 to 2	109	327	544
Superior	1 to 2	116	346	576
Superior Lake View	1 to 2	121	362	603
Family	1 to 4	145	435	725
25 OCT 11 – 31 MAR 12	ADULTS	1 NT	3 NTS	5 NTS
Standard	1 to 2	121	362	603
Superior	1 to 2	127	381	635
Superior Lake View	1 to 2	134	400	666
Family	1 to 4	164	490	816

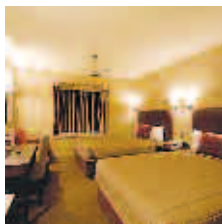
Other prices apply for Rugby World Cup.

**Children** 0 to 12 years – free when sharing with an adult and using existing bedding. Cot free of charge.

**Max capacity** Standard/Superior/Superior Lake View – 3, Family – 4.

**SHRROT**

## Distinction Rotorua ★★☆☆



Close to the famous Whakarewarewa Thermal Reserve, Redwood Forest and Te Puia; the hotel is the perfect base to explore Rotorua.

City Centre 2.8km  
Map page 33 Ref. 8

390 Fenton Street, Rotorua

### PROPERTY FEATURES:

- 24 hour reception
- Restaurant ▪ Bar
- Room service (24 hour)
- Resort shop
- Pool (heated outdoor)
- Spa ▪ Sauna ▪ Gymnasium
- Laundry/dry cleaning service
- Lift
- Parking (valet)

### ACCOMMODATION FEATURES:

- Fan
- Tea/coffee making facilities
- Internet access (broadband)
- Ironing facilities
- Safe
- Hair dryer

Room serviced daily



From **\$127** PER ROOM PER NIGHT\*

1 APR – 31 AUG 11	ADULTS	1 NT	3 NTS	5 NTS
Superior	1 to 2	127	381	635
Deluxe	1 to 2	139	416	694
Suite	1 to 2	188	563	938
1 – 8 SEP, 27 SEP – 7 OCT, 24 OCT – 30 NOV 11, 1 FEB – 31 MAR 12	ADULTS	1 NT	3 NTS	5 NTS
Superior	1 to 2	165	494	824
Deluxe	1 to 2	178	532	887
Suite	1 to 2	226	676	1127
1 DEC 11 – 31 JAN 12	ADULTS	1 NT	3 NTS	5 NTS
Superior	1 to 2	145	435	725
Deluxe	1 to 2	164	490	816
Suite	1 to 2	212	634	1056

Other prices apply for Rugby World Cup.

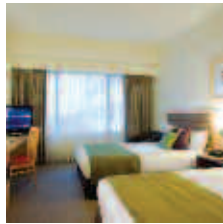
**Children** 0 to 11 years – up to 2 children free when sharing with 2 adults and using existing bedding.

**Max capacity** 3 adults or 2 adults/2 children.

**DISROT**



## Novotel Rotorua Lakeside ★★★★★



Experience well appointed guest rooms set amongst parkland on the picturesque shores of Lake Rotorua.

City Centre 290m  
Map page 33 Ref. 1

Tutanekai Street, Rotorua

### PROPERTY FEATURES:

- Day spa ■ 24 hour reception
- Restaurant ■ Café ■ Bar
- Room service (24 hour) ■ Gymnasium
- Pool (heated indoor) ■ Parking

### ACCOMMODATION FEATURES:

- Air-conditioning ■ Mini bar
- Tea/coffee making facilities
- In-room movies (pay to view)
- Cable TV
- Internet access (broadband)
- Ironing facilities ■ Hair dryer

Room serviced daily



From **\$127** PER ROOM PER NIGHT\*

1 – 21 APR, 26 APR – 8 SEP, 12 SEP, 16 – 22 SEP, 26 – 30 SEP 11	ADULTS	1 NT	3 NTS	5 NTS
Novotel Guest Room	1 to 2	127	379	631
Lake View Room	1 to 2	148	442	737
King Suite	1 to 2	199	596	993
1 – 13 OCT, 17 – 19 OCT, 24 OCT 11 – 31 MAR 12	ADULTS	1 NT	3 NTS	5 NTS
Novotel Guest Room	1 to 2	194	582	970
Lake View Room	1 to 2	218	653	1088
King Suite	1 to 2	273	818	1363

Other prices apply 22 – 25 Apr 11 and Rugby World Cup.

**Children** 0 to 15 years – up to 2 children free when sharing with an adult and using existing bedding.

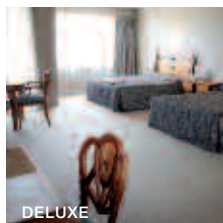
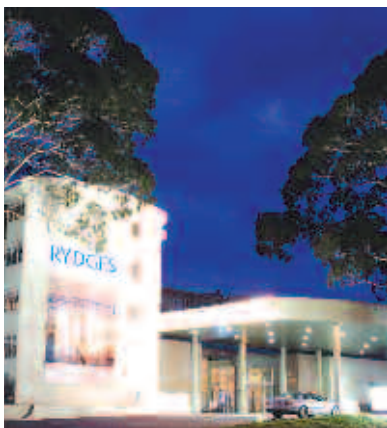
**Max capacity** 3 adults or 2 adults/2 children.

**NOVROT**

### TRAVELPOINT BONUS

FREE buffet breakfast for 2 adults daily for stays of 3 nights or more in a Lake View room, valid 1 – 21 Apr, 26 Apr – 24 Aug 11.

## Rydges Rotorua ★★★★★



Offering a range of spacious accommodation options in a parkland setting on the edge of Rotorua's racecourse.

City Centre 1.8km  
Map page 33 Ref. 5

272 Fenton Street, Rotorua

### PROPERTY FEATURES:

- 24 hour reception
- Restaurant ■ Bar
- Room service (24 hour)
- Pool (heated indoor) ■ Sauna
- Gymnasium ■ Parking

### ACCOMMODATION FEATURES:

- Tea/coffee making facilities
- Mini bar ■ Cable TV
- In-room movies (pay to view)
- Internet access (broadband)
- Ironing facilities ■ Hair dryer

Room serviced daily



From **\$82** PER ROOM PER NIGHT\*

1 APR – 31 AUG 11	ADULTS	1 NT	3 NTS	5 NTS
Standard	1 to 2	123	246	492
Deluxe	1 to 2	134	268	536
1 NOV 11 – 31 MAR 12	ADULTS	1 NT	3 NTS	5 NTS
Standard	1 to 2	157	314	628
Deluxe	1 to 2	168	336	672

Other prices apply for Rugby World Cup. Room and Breakfast prices also available.

**Children** 0 to 3 years – cot free of charge.  
4 to 12 years – up to 2 children free when sharing with an adult and using existing bedding.

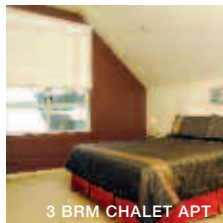
**Max capacity** Standard – 5, Deluxe – 4.

**RYDROT**

### TRAVELPOINT BONUS

FREE Night Offer: Stay 3 nights, pay for 2.  
(3 and 5 night prices include 1 free night)

## Marama Resort Rotorua, Mourea ◆◆◆



Nestled in 10 acres on the northern edge of Lake Rotorua, an idyllic location for families or couples.

Rotorua 18km  
Map page 33 Ref. 9

1420 Hamurana Road, Mourea

### PROPERTY FEATURES:

- Restaurant ■ Café
- Bar ■ Pool
- Barbecue area ■ Tennis court
- Exercise equipment ■ Internet facilities
- Parking ■ Non smoking

### ACCOMMODATION FEATURES:

- Balcony or patio
- Kitchen with microwave and dishwasher
- Cable TV ■ CD player
- Washer/dryer ■ Ironing facilities
- Hair dryer
- Gas fireplace (3 Bedroom Chalet Apartments)

Apartment serviced mid stay

From **\$152** PER ROOM PER NIGHT\*

1 – 30 APR 11	ADULTS	1 NT	2 NTS	5 NTS
2 Bedroom Canal House Apartment	1 to 4	192	342	855
3 Bedroom Lodge Apartment	1 to 5	249	383	958
3 Bedroom Chalet Apartment	1 to 6	237	454	1135
1 MAY – 15 AUG 11	ADULTS	1 NT	2 NTS	5 NTS
2 Bedroom Canal House Apartment	1 to 4	171	303	757
3 Bedroom Lodge Apartment	1 to 5	171	322	804
3 Bedroom Chalet Apartment	1 to 6	202	383	958
16 AUG – 8 SEP, 26 SEP 11 – 31 MAR 12	ADULTS	1 NT	2 NTS	5 NTS
2 Bedroom Canal House Apartment	1 to 4	194	363	907
3 Bedroom Lodge Apartment	1 to 5	216	409	1021
3 Bedroom Chalet Apartment	1 to 6	244	464	1159

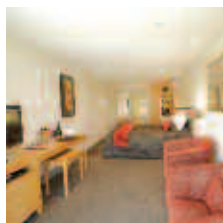
Other prices apply for Rugby World Cup.

**Children** 0 to 1 years – cot/bed charge payable direct.  
2 to 14 years – adult prices apply.

**Max capacity** 2 Bedroom Canal House Apartment – 4,  
3 Bedroom Lodge Apartment/3 Bedroom Chalet Apartment – 6.

**MARROT**

## Wai Ora Lakeside Spa Resort, Holdens Bay ◆◆◆◆



On the shores of Lake Rotorua, this boutique accommodation is complemented by superb spa facilities along with spa pools and saunas.

Rotorua 8km  
Map page 33 Ref. 13

77 Robinson Avenue, Holdens Bay

### PROPERTY FEATURES:

- Wai Ora Day Spa ■ Restaurant ■ Bar
- Room service (limited) ■ Pool ■ Sun deck
- Spas (2) ■ Sauna ■ Steam room
- Fireplace ■ DVD library ■ Non smoking
- Courtesy transfers from Rotorua, airport and Hells Gate (available if pre-booked)

### ACCOMMODATION FEATURES:

- Air-conditioning ■ Balcony or patio
- Limited cooking facilities with microwave
- Mini bar ■ Spa bath ■ Hair dryer
- Internet access (broadband – free)
- Cable TV ■ CD/DVD player ■ Bathrobes

Room serviced daily



From **\$257** PER ROOM PER NIGHT\*

1 APR – 30 SEP 11	ADULTS	1 NT	3 NTS	5 NTS
Deluxe Studio	1 to 2	257	769	1281
1 Bedroom Superior Suite	1 to 2	390	1170	1950
1 OCT 11 – 31 MAR 12	ADULTS	1 NT	3 NTS	5 NTS
Deluxe Studio	1 to 2	272	816	1360
1 Bedroom Superior Suite	1 to 2	406	1218	2029

**Includes** Full breakfast daily.

**Children** 0 to 12 years – not catered for.

**Max capacity** 2.

**WOLROT**

# Rotorua Surrounds

## Amora Lake Resort Okawa Bay, Rotorua ★★★★★



An idyllic lakefront hotel offering a range of facilities and located just 15 minutes from central Rotorua.

Rotorua 16km  
Map page 33 Ref. 10

366 State Highway 33, Mourea

### PROPERTY FEATURES:

- 24 hour reception
- Restaurant
- Bar
- Room service (limited)
- Gymnasium
- Pool (heated outdoor)
- Guest laundry
- Tennis courts (2)
- Non smoking
- Internet access (wireless)
- Parking
- Courtesy airport transfers (available if pre-booked)

### ACCOMMODATION FEATURES:

- Fan
- Tea/coffee making facilities
- Mini bar
- Internet access (broadband)
- Cable TV
- Ironing facilities
- Hair dryer
- Bathrobes
- Corner spa bath (Suites)

Room serviced daily



From **\$209** PER ROOM PER NIGHT\*

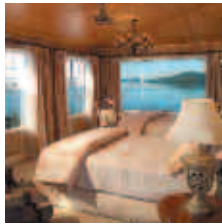
1 APR – 31 AUG 11	ADULTS	1 NT	3 NTS	5 NTS
Lake View Room	1 to 2	209	627	1044
Lake View Suite	1 to 2	344	1031	1718
1 NOV 11 – 31 MAR 12	ADULTS	1 NT	3 NTS	5 NTS
Lake View Room	1 to 2	276	828	1379
Lake View Suite	1 to 2	411	1232	2053

**Children** 0 to 11 years – up to 2 children free when sharing with an adult and using existing bedding.

**Max capacity** Lake View Room – 3 adults or 2 adults/2 children, Lake View Suite – 2.

AMOROT

## Peppers on the Point, Kawaha Point ★★★★★



An intimate retreat featuring spectacular views to the historic Mokoia Island and surrounded by Lake Rotorua.

Rotorua 5km  
Map page 33 Ref. 11

214 Kawaha Point Road, Kawaha Point

### PROPERTY FEATURES:

- Restaurant
- Bar
- Massage room
- Room service (limited)
- Library
- Tennis court
- Exercise equipment
- Laundry/dry cleaning service

### ACCOMMODATION FEATURES:

- Air-conditioning
- Spa bath
- Tea/coffee making facilities
- Cable TV
- CD/DVD player
- Internet access (wireless)
- Ironing facilities
- Hair dryer

Room serviced daily



From **\$593** PER ROOM PER NIGHT\*

1 APR – 9 SEP 11	ADULTS	1 NT	3 NTS	5 NTS
Lodge/Cottage Suite	1	593	1778	2963
Main Suite	1	736	2206	3676
	2	910	2728	4546
10 SEP 11 – 31 MAR 12	ADULTS	1 NT	3 NTS	5 NTS
Lodge/Cottage Suite	1	770	2310	3849
Main Suite	1	955	2865	4775
	2	1150	3449	5748

2 night minimum stay applies 10 Sep – 23 Oct, 25 – 31 Dec 11. Dinner, Room and Breakfast prices also available.

**Includes** Full breakfast daily.

**Children** 0 to 4 years – free when sharing with an adult and using existing bedding.  
5 to 12 years – prices on application.

**Max capacity** 2 adults/1 child.

PEPROT

## Solitaire Lodge, Lake Tarawera ★★★★★



Set on a private peninsula on the shores of legendary Lake Tarawera. All 10 suites feature panoramic views of the lake's still waters.

Rotorua 23km  
Map page 33 Ref. 16

16 Ronald Road, Lake Tarawera

### PROPERTY FEATURES:

- 24 hour reception
- Restaurant
- Bar
- Guest lounge
- Room service (24 hour)
- Barbecue area
- Guest laundry
- Internet access (wireless)
- Dry cleaning service
- Parking

### ACCOMMODATION FEATURES:

- Air-conditioning
- Balcony
- Tea/coffee making facilities
- Mini bar
- Cable TV
- CD/DVD player
- Spa bath
- Internet access (wireless – free)
- Hair dryer
- All rooms non smoking

Room serviced daily



From **\$1160** PER ROOM PER NIGHT\*

1 – 30 APR, 1 OCT – 24 DEC, 27 – 31 DEC 11, 3 JAN – 31 MAR 12	ADULTS	1 NT	3 NTS	5 NTS
Executive Suite	2	1334	4002	6670
Solitaire Suite/Tarawera Suite/Villa Suite	2	1605	4815	8025
1 MAY – 30 SEP 11	ADULTS	1 NT	3 NTS	5 NTS
Executive Suite	2	1160	3480	5799
Solitaire Suite/Tarawera Suite/Villa Suite	2	1434	4300	7166
25 – 26 DEC 11, 1 – 2 JAN 12	ADULTS	1 NT	2 NTS	3 NTS
Executive Suite	2	N/A	3089	N/A
Solitaire Suite/Tarawera Suite/Villa Suite	2	N/A	3629	N/A

2 night minimum stay applies 22 – 24 Dec, 27 – 31 Dec 11, 3 – 7 Jan 12.

**Includes** Full breakfast and four course dinner daily. Pre-dinner drinks and canapés daily. Use of kayaks, motorised dinghies and fishing equipment.

**Children** 0 to 15 years – prices on application.

**Max capacity** Executive Suite – 2, Solitaire Suite – 2 adults/2 children, Tarawera Suite/Villa Suite – 4. **SOLROT**



Lake Rotorua



## Maori Evening Hangi and Concert



Experience an evening of ceremonial ritual, powerful cultural performance, storytelling and hangi feasting as significant events within pre-European Maori history are re-enacted.

Share in the Powhiri – the ancient ceremony of welcome, before being invited into the pre-European village nestled within the ancient Tawa forest. With bonfires blazing, witness time honoured crafts and past-times of the Ngati Tama people. At the heart of the village, enter the Meeting House for a powerful and entertaining cultural performance before entering the fully-covered hangi pit area. Watch the Chiefs lift the sumptuous hangi meal that has been cooking on the hot stones beneath the ground for more than three hours. Enjoy succulent New Zealand meats with a lovely, slightly-smoked flavour and fresh vegetables from the hangi as well as Maori breads, salads, desserts and more!

### INCLUDES:

- Traditional Maori welcome
- Guided village tour ▪ Cultural performance
- Traditional hangi buffet meal (beverages extra charge)
- Return transfers from Rotorua accommodation

**Departs:** Daily from Rotorua, 30 minutes prior to show time

**Commences:** 6:30pm (show time varies seasonally)

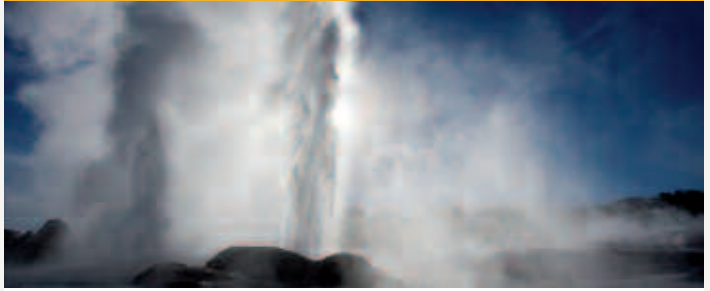
**Duration:** 3 hours 30 minutes

PRICE:	1 APR – 30 SEP 11	1 OCT 11 – 31 MAR 12
Adult	\$79	\$83
Child 5-15 years	\$46	\$47

TAMAKI HERITAGE EXPERIENCES

TAMROT

## Te Puia



Te Puia is the premier Maori cultural centre in New Zealand.

At the core of Te Puia is the New Zealand Maori Arts and Crafts Institute. It maintains and preserves the customary art forms of Maori and has nurtured and trained hundreds of artists in carving, weaving and other art forms. Te Puia also offers the wonders of Te Whakarewarewa Geothermal valley. See boiling mud pools and the world famous 30 metre Pohutu geyser, which erupts up to 20 times a day.

Engage in a range of experiences including interpretive galleries with state of the art interactive media, awe inspiring spaces rich in history and stories and come face to face with New Zealand's most well-known bird, the kiwi.

For an exciting introduction to Maori culture, enjoy a cultural performance inside the Marae meeting house.

**Open:** 8am – 6pm (summer), 8am – 5pm (winter) daily

**Departs:** Daytime Experience: Hourly from 9am – 5pm (summer), 9am – 4pm (winter)  
Cultural Performance: 10:15am, 12:15pm, 3:15pm

**Duration:** Daytime Experience: 1 hour 30 minutes  
Cultural Performance: 45 minutes

PRICE:	DAYTIME EXPERIENCE	DAYTIME EXPERIENCE WITH CULTURAL PERFORMANCE
Adult	\$34	\$42
Child 5-15 years	\$17	\$21

TE PUIA

TEPROT

## Whakarewarewa Thermal Village



Set amidst a landscape of erupting geothermal activity, hot thermal springs and hot bubbling mud pools is the living Maori village of Whakarewarewa situated in Rotorua, the heart of the North Island. Discover the unique lifestyle and traditions of the Maori people who live in harmony with Mother Nature within this unique environment.

Guided tours run hourly and will allow you to see first hand the geothermal activity and how it is used in everyday life with hot springs and steam vents used for cooking and the natural mineral waters used for communal bathing. Mingle with the villagers who are always delighted to share their knowledge and pastimes within the Whakarewarewa Village, the place they call home.

Sit down and relax at the twice daily cultural performances. Melodious voices accompanied by hand movements tell the stories of heritage, past and present.

### INCLUDES:

- Guided village tour ▪ Cultural performance
- Opportunity to meet and interact with villagers
- Fully carved ancestral meeting house ▪ Views of Pohutu Geyser

**Open:** 8:30am – 5pm daily except Christmas Day

**Guided Tours:** Hourly 9am – 4pm

**Cultural Performances:** 11:15am, 2pm

PRICE:	
Adult	\$24
Child 5-12 years	\$11

WHAKAREWAREWA THERMAL VILLAGE TOURS

WHAROT

## Cultural Hangi Experience



Discover the unique lifestyle and traditions of the Living Maori village – Whakarewarewa.

Join a guided tour of the village and learn about the traditions and culture which have been passed down for generations. Explore at leisure a landscape of erupting geothermal activity, hot springs and bubbling mud pools. Enjoy a traditional hangi, cooked in the geothermal steam and hot springs and be entertained by one of the cultural performances held throughout the day, telling the stories of Maori heritage past and present.

### INCLUDES:

- Guided village tour
- Opportunity to meet and interact with villagers
- Fully carved ancestral meeting house
- Views of Pohutu Geyser ▪ Cultural performance
- Traditional plated hangi lunch and dessert (beverages extra charge)
- Tea and coffee

**Open:** 8:30am – 5pm daily except Christmas Day

**Guided Tours:** Hourly 9am – 4pm

**Cultural Performances:** 11:15am, 2pm

**Hangi Meals:** Served between 12 noon – 2pm

PRICE:	
Adult	\$49
Child 5-12 years	\$25

WHAKAREWAREWA THERMAL VILLAGE TOURS

WHAROT

# Tours from Rotorua

## Discover Rotorua



Experience Te Puia, a place of Maori culture and a thermal wonderland of impressive geysers and boiling mud pools. Explore Rainbow Springs Nature Park, which showcases native flora and fauna as well as the New Zealand Kiwi. See New Zealand's agricultural industry in action with a sheep shearing display and sheep dog trials at the Agrodome. Travel up the Skyline Skyrides Gondola for stunning views over Rotorua (optional extra). Following the gondola experience shuttle transfer back to Rotorua accommodation.

**INCLUDES:**

- Entry to Te Puia Thermal Reserve
- Maori Arts and Crafts Institute
- Rainbow Springs Nature Park
- Agrodome Sheep Show
- Skyline Gondola Ride (optional extra)
- Lunch (optional extra)
- Return transfers from selected Rotorua accommodation

**Departs:** Daily from Rotorua at 7:25am

**Returns:** Discover Rotorua: 12:15pm  
Skyline Gondola and Lunch: 2:15pm

PRICE:	DISCOVER ROTORUA		WITH SKYLINE GONDOLA AND LUNCH	
	1 APR – 30 SEP 11	1 OCT 11 – 31 MAR 12	1 APR – 30 SEP 11	1 OCT 11 – 31 MAR 12
Adult	\$106	\$110	\$145	\$150
Child 3-12 years	\$53	\$55	\$70	\$72

GREAT SIGHTS NEW ZEALAND

GRENZL

## Rotorua Hotspots



Witness incredible geothermal activity including gushing geysers, boiling mud pools and colourful volcanic craters. Experience the stunning volcanic landscapes of the Wai-O-Tapu Thermal Wonderland and walk through the amazing landscape of hot crater lakes and boiling hot springs of Waimangu Volcanic Valley.

After lunch, enjoy a scenic boat cruise on picturesque Lake Rotomahana with spectacular views of lake-edge geysers, steaming cliffs and fumaroles. Finish the day with a relaxing bathe in the natural mineral waters of the Waikite Valley Thermal Hot Pools.

**INCLUDES:**

- Volcanic nature walk
- Waiotapu Thermal Wonderland
- Wai-O-Tapu Volcanic Valley
- Lake Rotomahana cruise
- Waikite Valley Thermal Hot Pools
- Lady Knox Geyser
- Picnic lunch
- Return transfers from selected Rotorua accommodation

**Departs:** Daily from Rotorua at 8am

**Returns:** 5pm

PRICE:	1 APR – 30 SEP 11	1 OCT 11 – 31 MAR 12
	Adult	\$213
Child 6-15 years	\$106	\$114

NATURE CONNECTIONS

NATROT

## Geothermal Wonderland Tour and Adventure Tour



Experience the awesome earth forces, amazing geothermal activity and stunning volcanic landscapes of Wai-O-Tapu Thermal Wonderland and Waimangu Volcanic Valley. See New Zealand's largest boiling mud lake, Lady Knox Geyser, hot streams, boiling hot springs, hissing fumaroles, vividly coloured silica terraces and native rainforest and birdlife.

Continue on from the Geothermal Wonderland tour for the full day Adventure Tour. Enjoy the stunning beauty and panoramic views of Lake Tarawera, Blue and Green Lakes and a walk in the Redwood Forest.

**GEOHERMAL WONDERLAND INCLUDES:**

- Volcanic nature walk
- Commentary by experienced guide
- Return transfers from selected Rotorua accommodation

**ADVENTURE TOUR ALSO INCLUDES:**

- Lake Tarawera
- Redwood Forest ▪ Picnic lunch

**Departs:** Daily from Rotorua at 8am

**Returns:** Geothermal Wonderland: 12:30pm  
Adventure Tour: 4pm

PRICE:	1 APR – 30 SEP 11		1 OCT 11 – 31 MAR 12	
	ADULT	CHILD 6-15 YEARS	ADULT	CHILD 6-15 YEARS
Geothermal Wonderland	\$106	\$53	\$114	\$57
Adventure Tour	\$173	\$87	\$189	\$95

NATURE CONNECTIONS

NATROT

## Rainbow Springs and Kiwi Encounter



Rainbow Springs Kiwi Wildlife Park has been a favourite destination since 1932. Spread over 22 acres of parkland, a visit to Rainbow Springs is a must to experience New Zealand's wonderful environment and discover fascinating native animals such as the kiwi bird and the tuatara – the magnificent living dinosaur – both during the day and night.

Visit Kiwi Encounter and learn about the entire process of kiwi conservation with an insightful and informative guided tour. From kiwi egg collection in the wild, incubation, hatching and then raising of the kiwi until it's ready to be released back into the wild, this is a truly unique scientific attraction.

**INCLUDES:**

- Entry to Rainbow Springs
- Feed Rainbow trout
- 'Open to view' Kiwi hatchery
- The tuatara – the living dinosaur
- Entry to Kiwi Encounter and guided tour

**Open:** Daily  
Rainbow Springs: 8am – 11pm (summer), 8am – 9pm (winter)  
Kiwi Encounter: Guided tours operate hourly 10am – 4pm

PRICE:	1 APR – 30 SEP 11	1 OCT 11 – 31 MAR 12
	Adult	\$33
Child 5-15 years	\$18	\$15

RAINBOW SPRINGS

RAIROT



## Agrodome



The Agrodome offers an experience like no other – seeing through the eyes of a true New Zealand farmer. Situated just north of Rotorua city on a scenic 160 hectare sheep and beef farm, this exciting, educational and hands-on experience is one not to be missed!

The Agrodome Sheep Show is an entertaining and informative insight into the world of New Zealand agriculture, featuring 19 breeds of sheep, sheep shearing, cow milking, lamb feeding and dog demonstrations. Join the Organic Farm Tour for a hands-on experience with a variety of farm animals and visit the Organic Orchard for honey and kiwifruit juice tasting.

A visit to the Agrodome can be packaged with a Lakeland Queen cruise on the tranquil waters of Lake Rotorua.

**Operates:** Daily  
 Sheep Show: 9:30am, 11am, 2:30pm  
 Organic Farm Tour: 10:40am, 12:10pm, 1:30pm, 3:40pm  
 Lakeland Queen Breakfast Cruise: 7am, 8am  
 Lakeland Queen Lunch Cruise: 1pm

**Duration:** 1 hour

PRICE:	1 APR – 30 SEP 11		1 OCT 11 – 31 MAR 12	
	ADULT	CHILD 5-15 YEARS	ADULT	CHILD 5-15 YEARS
Sheep Show	\$21	\$11	\$23	\$12
Sheep Show and Organic Farm Tour	\$41	\$20	\$44	\$22
Sheep Show and Breakfast Cruise	\$49	\$25	\$56	\$28
Sheep Show and Lunch Cruise	\$56	\$28	\$62	\$31

AGRODOME

AGRROT

## Agroventures



Agroventures offers truly unique New Zealand adventures for men and women of all ages, from adrenaline junkies, speed demons to those who enjoy a more low key experience. Located 15 minutes north of Rotorua, Agroventures offers five exhilarating activities all conveniently located within 60 metres of each other.

Try Shweeb – the world's only human powered monorail; Rotorua Bungy – a New Zealand icon; Agrojet – the fastest jet sprint experience in New Zealand; Swoop – swing from 40 metres towards the earth at 130 kilometres per hour; or Freefall Xtreme – the Southern Hemisphere's only wind tunnel. Spend an hour or the entire day – you will have an unforgettable experience and a sense of accomplishment that will remain long after you have waved farewell.

**TRIPLE BYPASS INCLUDES:**

- Choose any 3 of the following:
  - Agrojet • Swoop • Freefall Xtreme • Shweeb

**4-TUNE INCLUDES:**

- Agrojet ▪ Swoop ▪ Freefall Xtreme ▪ Shweeb

**VIP INCLUDES:**

- Rotorua Bungy ▪ Agrojet ▪ Swoop ▪ Freefall Xtreme ▪ Shweeb

**Open:** 9am – 5pm daily except Christmas Day

PRICE:	ADULT	CHILD 0-15 YEARS
Triple Bypass	\$95	\$75
4-Tune	\$118	\$95
VIP	\$173	\$150

AGROVENTURES

AGVROT

## River Rats Kayaking Adventures



Kayaking with River Rats is available as a freedom trip at your own leisure or a guided tour.

Explore the beautiful scenery and wildlife by kayak on the Ohau Channel Freedom Trip. Provided with kayaks, equipment, maps and information, paddle at your own leisure along Lake Rotorua and down the Ohau Channel to Lake Rotoiti and down the lake's Okere Arm. A transfer back to the base is included.

Join the Hot Pools Kayak Tour for a guided kayak trip to the spectacular Manupirua Springs Hot Pools on Lake Rotoiti. Paddle down the Ohau Channel and across Lake Rotoiti to this amazing spot only accessible by boat. There is plenty of time to relax and enjoy the naturally fed hot pools, before paddling back to base.

**INCLUDES:**

- Well maintained kayaks and equipment
- Experienced raft guide (Guided Hot Pools Kayak Tour)
- Return transfers from Rotorua accommodation (Guided Hot Pools Kayak Tour)

**Departs:** Daily from 391 State Highway 33, Mourea  
 Ohau Channel Freedom Trip: On request

Guided Hot Pools Kayak Tour: 12 noon  
 (1 – 21 Apr 11, 26 Sep 11 – 31 Mar 12), on demand (22 Apr – 25 Sep 11)

**Duration:** 2 hours

PRICE:	ADULT	CHILD 5-15 YEARS
Ohau Channel Freedom Trip	\$35	\$20
Guided Hot Pools Kayak Tour	\$75	\$75 <sup>^</sup>

<sup>^</sup> Minimum age is 10 years. Children 5 – 9 years on application. Kayak hire prices also available.

RIVER RATS RAFT AND KAYAK

RIVROT

## River Rats Rafting Adventures



Experience the thrill of rafting with River Rats. There's something for everyone, from a gentle grade two scenic raft trip suitable for participants as young as five, through to full on grade five action featuring the world's highest commercially rafted waterfall.

**INCLUDES:**

- Full instruction
- All equipment
- Lunch (Wairoa River, Rangitaiki River)
- Return transfers from Rotorua accommodation (Kaituna River, Rangitaiki River)

**Departs:** Kaituna River: Daily from 391 State Highway 33, Mourea at 9am, 12:30pm, 3:30pm (1 – 21 Apr, 26 Sep 11 – 31 Mar 12), 10am, 2pm (22 Apr – 25 Sep 11)

Wairoa River: Daily from Ruahihi Road, Lower Kaimai Ranges at 10am, 1pm  
 Rangitaiki River: Daily from State Highway 38, Murupara at 11:30am

**Duration:** Kaituna River: 2 hours  
 Wairoa River: 3 hours 30 minutes  
 Rangitaiki River: 4 hours

PRICE:	ADULT	CHILD 5-15 YEARS
Kaituna River (Grade 5)	\$75	\$75 <sup>^</sup>
Wairoa River (Grade 5)	\$91	\$91 <sup>^</sup>
Rangitaiki River (Grade 3-4)	\$98	\$98 <sup>+</sup>
Rangitaiki River Scenic (Grade 2)	\$98	\$67

<sup>^</sup> Minimum age is 13 years. <sup>+</sup> Minimum age is 10 years.  
 Return transfer prices for Wairoa River available on request.

RIVER RATS RAFT AND KAYAK

RIVROT

# Tours from Rotorua

## New Zealand Riverjet Tours



More than just a jet boat ride! Combine scenic and spin-thrilling jet boating with geothermal attractions, nature's flora and fauna, hot pools, and commentary. Set off with scenic jet boating on the magnificent Waikato River through the spectacular Tutukau Gorge – see bird life, farmlands and steaming volcanic river banks. Then explore the Orakei Korako geothermal wonderland viewing gushing geysers, incredible silica terraces, boiling mud pools, and a rare geothermal cave (Thermal Safari). Or wade, squeeze and clamber through a narrow canyon in a hot thermal stream (20 – 40 degrees), and swim in a natural hot pool fed by a thermal waterfall (The Squeeze). Return with a spin-thrilling action-packed jet boat ride.

**THERMAL SAFARI INCLUDES:**

- Scenic jetboat ride ▪ Jetboat thrill ride
- Entry to Orakei Korako geothermal wonderland

**THE SQUEEZE INCLUDES:**

- Scenic jetboat ride ▪ Wading, squeezing and climbing through thermal stream
- Swimming in hot thermal pool ▪ Jetboat thrill ride

**Departs:** Daily from New Zealand Riverjet base, Highway 5, between Rotorua and Taupo at 11am (2pm departures also available on request)

**Duration:** 2 hours 30 minutes to 3 hours

PRICE:	1 APR – 30 SEP 11		1 OCT 11 – 31 MAR 11	
	THERMAL SAFARI	THE SQUEEZE	THERMAL SAFARI	THE SQUEEZE
Adult	\$115	\$103	\$125	\$106
Child 3-15 years <sup>^</sup>	\$59	\$59	\$62	\$62

<sup>^</sup> Minimum age for The Squeeze is 8 years.

NEW ZEALAND RIVERJET

NZRROT

## NZONE Skydive Rotorua



Rotorua is home to the Maori and known as both the geothermal and cultural centre of New Zealand. Tandem skydive from high above this geothermal area and embrace the spirit of Ranginui, the Maori Sky God.

Choose to skydive from any of the following altitudes and freefall at a terminal velocity of 200 kilometres per hour! 9,000 feet for 25 seconds freefall, 12,000 feet for 45 seconds freefall or 15,000 feet for 60 seconds freefall.

Your flight to altitude will take you high above the Rotorua thermal region, where you will have a bird's-eye view of the dramatic geothermal activity and forests. Jumping directly above the dropzone you will experience freefall of up to 60 seconds before your Tandem Master deploys the parachute and together you glide back to earth. The canopy ride takes approximately five minutes.

Expect sensory overload as your mind, body and soul fight against every natural self-preservatory urge. This is a personal challenge to which you'll be able to say 'yes, I did it!'

**INCLUDES:**

- Scenic flight over Rotorua ▪ All equipment and gear
- Experienced Tandem Master ▪ Return transfers from Rotorua accommodation

**Departs:** Daily from Nzone Dropzone, Rotorua Airport, hourly between 8:30am – 2:30pm

**Duration:** 2 hours

PRICE:	9,000 FEET	12,000 FEET	15,000 FEET
Adult	\$212	\$259	\$338

Maximum weight 100kg.

NZONE SKYDIVE

NZOZQN

## Mount Tarawera Volcano Scenic Flights



Mount Tarawera erupted in 1886 creating an eight kilometre long volcanic rift along its summit, the magnitude of which is only fully appreciated when viewed from above. Choose from two scenic flight options for a true volcanic experience.

**Floatplane Mount Tarawera and Waimangu**

Enjoy a 30 minute floatplane flight from Lake Rotorua over the Crater Lakes District. Fly over Mount Tarawera's crater rift and wonder at the massive destruction caused by the 1886 eruption. Continue south past the steaming cliffs and the hot lakes of Waimangu Volcanic Valley. Return to Rotorua over the Blue and Green Lakes, the geysers of Whakarewarewa Thermal Reserve and Rotorua city.

**Helicopter Mount Tarawera and Hell's Gate**

Enjoy a 25 minute helicopter flight from the Rotorua city lakefront over the Crater Lakes District to the summit of Mount Tarawera to view the spectacular volcanic rift of this iconic attraction from above. Continue north over Lake Okataina to an exclusive landing and 25 – 30 minute guided tour at Hell's Gate – Rotorua's most active geothermal area. Return across Lake Rotorua.

**INCLUDES:**

- Informative commentary ▪ Return transfers from Rotorua accommodation

**Departs:** Daily on demand

**Duration:** Floatplane: 30 minutes Helicopter: 1 hour

PRICE:	FLOATPLANE	HELICOPTER
Adult	\$154	\$264
Child 2-11 years	\$115	\$199

VOLCANIC AIR SAFARIS

VOLROT

## Helicopter White Island



Land on and explore New Zealand's most active volcano!

Enjoy a scenic helicopter flight north over Hell's Gate Thermal Valley to the Pacific Ocean coastline and the active volcano of White Island. Land at the crater's rim and spend approximately one hour on a guided walk of this fascinating natural attraction. Experience the volcanic fury of the main crater, view sulphur deposits and the remains of the old sulphur mine.

Add on a flight over Mount Tarawera to see this volcano and the immense destruction caused by its 1886 eruption.

**INCLUDES:**

- Up to 1 hour 15 minute scenic flight
- Guided White Island volcano walk
- 15 minute Mount Tarawera scenic flight (optional extra)
- Informative commentary
- Return transfers from Rotorua accommodation

**Departs:** Daily on demand

**Duration:** 3 hours

PRICE:	WITH MOUNT TARAWERA	
Adult	\$600	\$681
Child 2-11 years	\$450	\$511

VOLCANIC AIR SAFARIS

VOLROT