

# Northland and Bay of Islands



Opuia, Bay of Islands

Welcome to Northland, an unspoilt subtropical playground.

Tour along Ninety Mile Beach, golf at Kauri Cliffs or visit Tane Mahuta, the largest kauri tree in the world found in the beautiful Waipoua Forest. When it's time to get your feet wet, take your pick – there's jet skiing, snorkelling, fishing, kayaking, swimming with dolphins, and that's all before you begin to explore the inland sights.

The Bay of Islands is an aquatic playground where you will see things you won't find anywhere else. Cruise right through the 'Hole in the Rock' on Piery Island, see the Haruru Falls where the water falls in a horse shoe shape, or visit Pompallier, a Catholic missionary house made from rammed earth.

Right at the top of New Zealand is Cape Reinga. Walk up to the lighthouse for expansive views of the Pacific Ocean meeting the Tasman Sea and see the ancient pohutukawa tree, a site of Maori cultural and spiritual significance. Take the four wheel drive along Ninety Mile Beach and sand board down some pretty impressive dunes at Te Pahi Stream.

Northland is also a place of rich New Zealand history. The Treaty of Waitangi was signed in the Bay of Islands (a visit to the Waitangi Treaty Grounds is a must), Hokianga Harbour was the first Polynesian landing place and Russell was New Zealand's first capital.

## Our Favourites

Drive along Ninety Mile Beach to the top of New Zealand

Cruise to Cape Brett and the Hole in the Rock

Walk up to Cape Reinga Lighthouse to see the Pacific Ocean collide with the Tasman Sea

Dive at Poor Knight Islands or the Rainbow Warrior wreck



### FIND YOUR ACCOMMODATION

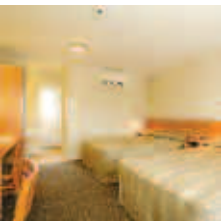
REF.	APARTMENTS	PAGE
1	Blue Pacific Apartments, Paihia ★★★★★	27
2	Eagles Nest, Russell ★★★★★	28

REF.	HOTELS	PAGE
1	Admirals View Lodge, Paihia ★★★★★	27
1	Copthorne Hotel & Resort Bay of Islands, Paihia ★★★★★	27
2	Flagstaff Lodge, Russell ★★★★★	28
1	Kingsgate Hotel Autolodge, Paihia ★★★★★	26
2	Ounuwahao B&B Guestlodge, Russell ★★★★★	27

**Other properties available**

1	Bay of Islands Lodge, Paihia ★★★★★	-
3	Copthorne Hotel and Resort Hokianga ★★★★★	-
4	Kingsgate Hotel Whangarei ★★★★★	-
1	Scenic Hotel Bay of Islands, Paihia ★★★★★	-

## Kingsgate Hotel Autolodge, Paihia ★★★★★



Located close to Paihia wharf, the Kingsgate Hotel is the ideal base from which to explore the Bay of Islands area.

**Beachfront**  
Town Centre 100m  
Map page 26 Ref. 1

- 104 Marsden Road, Paihia**
- PROPERTY FEATURES:**
- Restaurant ▪ Bar
  - Room service (limited)
  - Pools (2 – 1 heated, 1 children's wading)
  - Spa ▪ Fitness centre
  - Games room
  - Internet access (wireless)
  - Laundry/dry cleaning service
  - Guest laundry ▪ Parking

- ACCOMMODATION FEATURES:**
- Air-conditioning
  - Tea/coffee making facilities
  - Ironing facilities
  - Hair dryer
- Room serviced daily**

From **\$80** PER ROOM PER NIGHT\*

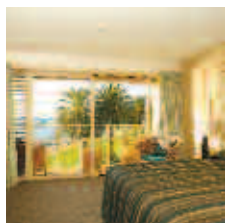
	ADULTS	1 NT	3 NTS	5 NTS
1 – 30 APR, 26 OCT – 31 DEC 11, 1 – 31 MAR 12				
Standard	1 to 2	141	421	702
Superior	1 to 2	188	563	938
1 MAY – 13 SEP, 15 – 20 SEP, 22 – 30 SEP 11				
Standard	1 to 2	107	320	532
Superior	1 to 2	107	320	532
1 JAN – 29 FEB 12				
Standard	1 to 2	170	509	847
Superior	1 to 2	218	653	1088

Other prices apply for Rugby World Cup.  
**Children** 0 to 13 years – free when sharing with an adult and using existing bedding. Cot free of charge.

**Max capacity** 3. **KINBOI**

**TRAVELPOINT BONUS**  
FREE Night Offer: Stay 4 nights, pay for 3, valid 1 Apr – 13 Sep, 22 – 30 Sep, 26 – 31 Oct, 1 – 31 Dec 11.

## Copthorne Hotel & Resort Bay of Islands, Paihia ★★★★★



Superb waterfront location, surrounded by 60 acres of lush subtropical gardens and part of the historic Waitangi Treaty Grounds.

**Beachfront**  
Town Centre 2km  
Map page 26 Ref. 1

Tau Henare Drive, Paihia

### PROPERTY FEATURES:

- Day spa ■ 24 hour reception
- Restaurant ■ Café ■ Bar ■ Tennis court
- Room service (24 hour) ■ Spa
- Pool (outdoor – heated in winter)
- Dry cleaning service ■ Parking
- Complimentary shuttle to town centre (9am – 5:30pm) ■ Non smoking

### ACCOMMODATION FEATURES:

- Balcony or patio ■ Ironing facilities
- Tea/coffee making facilities ■ Hair dryer
- Mini bar ■ Internet access (broadband)

Room serviced daily



From **\$87** PER ROOM PER NIGHT\*

1 – 30 APR, 26 OCT – 31 DEC 11, 1 – 31 MAR 12	ADULTS	1 NT	3 NTS	5 NTS
Standard Garden View <sup>^</sup>	1 to 2	194	580	966
1 MAY – 13 SEP, 15 – 20 SEP, 22 – 30 SEP 11	ADULTS	1 NT	3 NTS	5 NTS
Standard Garden View	1 to 2	116	346	576

Other prices apply 1 Jan – 29 Feb 12 and Rugby World Cup.

**Children** 0 to 13 years – up to 2 children free when sharing with 2 adults and using existing bedding. Cot free of charge.

**Max capacity** 3. **COPB01**

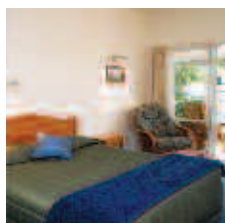
### TRAVELPOINT BONUS

FREE Night Offer: Stay 4 nights, pay for 3.

<sup>^</sup> FREE upgrade to a Superior Water View room (subject to availability). Stay 3 nights or more and also receive FREE full breakfast daily.

Offers not combinable.

## Admirals View Lodge, Paihia ★★★★★☆



Relax in a peaceful location with beautiful sea views and explore the exciting attractions the region has to offer.

**Beach 250m**  
Town Centre 1.2km  
Map page 26 Ref. 1

2 MacMurray Road, Paihia

### PROPERTY FEATURES:

- Barbecue area ■ Tennis courts (3)
- Bicycle hire ■ DVD library
- Internet facilities (free)
- Guest laundry ■ Parking

### ACCOMMODATION FEATURES:

- Air-conditioning ■ Balcony or patio
- Limited cooking facilities with microwave
- CD/DVD player ■ Cable TV
- Internet access (wireless)
- Ironing facilities ■ Hair dryer
- All rooms non smoking

Apartment serviced daily



From **\$138** PER ROOM PER NIGHT\*

1 – 30 APR 11	ADULTS	1 NT	3 NTS	5 NTS
Executive Studio	1 to 2	168	504	840
2 Bedroom	1 to 4	242	724	1206

1 MAY – 15 AUG 11	ADULTS	1 NT	3 NTS	5 NTS
Executive Studio	1 to 2	138	414	690
2 Bedroom	1 to 4	163	487	812

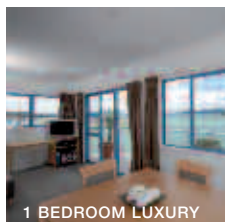
16 AUG 11 – 31 MAR 12	ADULTS	1 NT	3 NTS	5 NTS
Executive Studio	1 to 2	182	544	907
2 Bedroom	1 to 4	260	780	1300

**Children** 0 to 1 years – cot/bed charge payable direct. 2 to 14 years – adult prices apply.

**Max capacity** Executive Studio – 2, 2 Bedroom – 5.

**AVLB01**

## Blue Pacific Apartments, Paihia ★★★★★☆



Stylish self-contained apartments offering breathtaking views of the Bay of Islands, Paihia, Russell and Waitangi.

**Beachfront**  
Town Centre 1km  
Map page 26 Ref. 1

166 Marsden Road, Paihia

### PROPERTY FEATURES:

- Spas (5) ■ DVD library
- Guest laundry
- Internet access (wireless)
- Laundry/dry cleaning service
- Parking ■ Non smoking

### ACCOMMODATION FEATURES:

- Ocean views ■ Balcony or patio
- Fan ■ Barbecue
- Kitchen with microwave and dishwasher
- In-room movies (free) ■ CD/DVD player
- Internet access (wireless) ■ Bathrobes
- Washer/dryer ■ Hair dryer

Apartment serviced daily



From **\$163** PER ROOM PER NIGHT\*

1 MAY – 30 AUG 11	ADULTS	2 NTS	4 NTS	6 NTS
Luxury Studio with Spa	1 to 2	325	650	974
1 Bedroom Luxury	1 to 3	341	681	1022
2 Bedroom Luxury	1 to 3	376	751	1126
2 Bedroom Luxury with Spa	1 to 4	415	829	1244
2 Brm 2 Bathroom Luxury with Spa	1 to 4	541	1081	1622
3 Bedroom Luxury with Spa	1 to 6	681	1362	2043

1 SEP 11 – 31 MAR 12	ADULTS	2 NTS	4 NTS	6 NTS
Luxury Studio with Spa	1 to 2	409	817	1225
1 Bedroom Luxury	1 to 3	541	1081	1622
2 Bedroom Luxury	1 to 3	629	1258	1887
2 Bedroom Luxury with Spa	1 to 4	717	1434	2151
2 Brm 2 Bathroom Luxury with Spa	1 to 4	779	1557	2336
3 Bedroom Luxury with Spa	1 to 6	1039	2077	3116

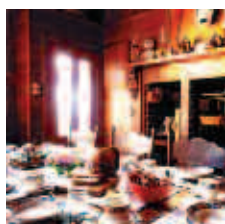
Other prices apply 1 – 30 Apr 11.

**Children** 0 to 11 years – free when sharing with an adult and using existing bedding. Cot free of charge.

**Max capacity** Studio/1 Bedroom – 2, 2 Bedrooms – 4, 3 Bedroom – 6.

**BLUB01**

## Ounuwhao B&B Guestlodge, Russell ◆◆◆◆◆



Ounuwhao is a fully restored Kauri villa set alongside a grassed reserve with views across the Matauwhi Bay.

**Beachfront**  
Town Centre 1km  
Map page 26 Ref. 2

16 Hope Avenue, Matauwhi Bay, Russell

### PROPERTY FEATURES:

- Room service (limited) ■ Guest lounge
- Fireplace ■ Internet access (wireless)
- Laundry service ■ Guest laundry
- Parking ■ Non smoking
- Courtesy transfer from Russell Wharf (available if pre-booked)

### ACCOMMODATION FEATURES:

- Balcony ■ Internet access (wireless)
- Kitchen with microwave (Cottage)
- Barbecue area (Cottage)
- Cable TV ■ Ironing facilities ■ Safe
- 2 bathrooms (Cottage) ■ Bathrobes
- Spa bath (Garden Suite) ■ Hair dryer

Room serviced daily

From **\$158** PER ROOM PER NIGHT\*

1 APR – 31 MAY, 1 AUG 11 – 31 MAR 12	ADULTS	1 NT	3 NTS	5 NTS
Lodge Room	1	158	473	788
	2	237	710	1182
Garden Suite	1 to 2	276	828	1379
Self Contained Cottage	1 to 2	276	828	1379

Lodge is closed 1 Jun – 31 Jul 11.

**Includes** Lodge Room and Garden Suite include full cooked breakfast daily.

**Children** 0 to 14 years – prices on application.

**Max capacity** Lodge Room – 3, Garden Suite – 2, Self Contained Cottage – 4.

**OUNB01**

## Eagles Nest, Russell ★★★★★



A stylish retreat set within a 75 acre estate atop a private ridgeline offering spectacular views of the Bay of Islands.

Beach 200m  
Town Centre 2km  
Map page 26 Ref. 2

60 Tapeka Road, Russell

### PROPERTY FEATURES:

- 24 hour reception ▪ Barbecue areas (5)
- Pool (heated outdoor) ▪ Saunas (3)
- Massage facilities ▪ Fitness centre
- DVD library ▪ Parking (valet)

### ACCOMMODATION FEATURES:

- Pool (heated lap – except First Light)
- Fireplace ▪ Kitchen with dishwasher
- Fan ▪ Balcony or patio (ocean views)
- Barbecue ▪ Mini bar
- Cable TV ▪ iPod docking station
- In-room movies (free) ▪ CD/DVD player
- Internet access (wireless – free)
- Laundry ▪ 2 bathrooms

Villa serviced daily

From **\$1044** PER ROOM PER NIGHT\*

1 – 30 APR, 15 OCT – 14 DEC 11	ADULTS	1 NT	3 NTS	5 NTS
First Light	1 to 2	1446	4338	7229
Eagle Spirit/The Eyrie	1 to 6	1929	5786	9644
Sacred Space	1 to 8	3540	10620	17699
1 MAY – 14 OCT 11	ADULTS	1 NT	3 NTS	5 NTS
First Light	1 to 2	1044	3130	5216
Eagle Spirit/The Eyrie	1 to 6	1446	4338	7229
Sacred Space	1 to 8	2654	7961	13268
15 DEC 11 – 31 MAR 12	ADULTS	1 NT	3 NTS	5 NTS
First Light	1 to 2	1849	5545	9242
Eagle Spirit/The Eyrie	1 to 6	2412	7235	12058
Sacred Space	1 to 8	4426	13276	22127

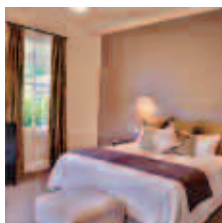
Rahimoana Villa prices also available.

**Includes** French champagne on arrival, gourmet breakfast provisions daily and non-alcoholic mini bar items.

**Children** 0 to 14 years – adult prices apply.

**Max capacity** First Light – 2, Eagle Spirit/The Eyrie – 6, Sacred Space – 8. **EAGBO1**

## Flagstaff Lodge, Russell ★★★★★



Set within the peaceful village of Russell, this beautifully restored 1912 villa features stylish accommodation.

Beach 200m  
Town Centre 500m  
Map page 26 Ref. 2

17 Wellington Street, Russell

### PROPERTY FEATURES:

- Day spa ▪ Internet access (wireless)
- Non smoking ▪ Parking

### ACCOMMODATION FEATURES:

- Air-conditioning ▪ Balcony or patio
- Bay views ▪ Fireplace
- Tea/coffee making facilities
- Mini bar ▪ iPod docking station
- Cable TV ▪ CD/DVD player
- Internet access (wireless – free)
- Ironing facilities ▪ Laundry
- Bathrobes ▪ Hair dryer

Room serviced daily



From **\$316** PER ROOM PER NIGHT\*

1 – 30 APR, 1 NOV 11 – 31 MAR 12	ADULTS	1 NT	3 NTS	5 NTS
Sunset/Pacific	2	434	1300	2167
Strand/Pohutakawa	2	513	1537	2561
1 MAY – 31 AUG 11	ADULTS	1 NT	3 NTS	5 NTS
Sunset/Pacific	2	316	946	1576
Strand/Pohutakawa	2	394	1182	1970
1 SEP – 31 OCT 11	ADULTS	2 NTS	3 NTS	5 NTS
Sunset/Pacific	2	867	1300	2167
Strand/Pohutakawa	2	1025	1537	2561

**Includes** Full breakfast daily. Evening drinks and canapés daily.

**Children** 0 to 11 years – not catered for (1 – 30 Apr, 1 Oct 11 – 31 Mar 12), prices on application (1 May – 30 Sep 11).

**Max capacity** 2.

**FLABO1**

## Cape Brett Hole in the Rock Cruise



Take a glimpse into New Zealand's earliest European history as you cruise past the township of Russell (Kororareka) and historic and culturally significant islands in the bay. Enjoy views of Cape Brett Lighthouse, before arriving at Motukokako Island, home of the majestic Hole in the Rock.

Venture into the Hole in the Rock (weather permitting) and admire the rock walls which soar above you. Take in the Grand Cathedral Cave and keep an eye out for Bottlenose and Common dolphins. Enjoy a visit to one of the most beautiful islands in the bay where you can walk or unwind on the beach.

### INCLUDES:

- 1 hour island stopover
- Cape Brett Lighthouse
- Iconic Hole in the Rock
- Informative commentary

**Departs:** Daily from Paihia Wharf at 9am, 1:30pm, Russell Wharf at 9:10am, 1:40pm

**Returns:** Paihia Wharf at 1pm, 5:30pm, Russell Wharf at 12:50pm, 5:20pm

### PRICE PER PERSON:

Adult	\$74
Child 5-14 years	\$37

FULLERS GREAT SIGHTS BAY OF ISLANDS

FULBO1

## Discover the Bay Hole in the Rock Cruise



Discover what the Bay of Islands is really all about. The bay boasts some of the most spectacular ecosystems and has become renowned as a world class playground.

See Cape Brett and view the iconic 'Hole in the Rock', See the local dolphins up close and encounter other diverse wildlife in their natural surroundings. Visit the stunning Otehei Bay and enjoy time on the beach or explore Urupukupuka Island and learn about the incredible community ecological restoration programme, 'Project Island Song'.

This cruise is an experience like no other where you'll see stunning scenery and learn about the rich history and culture of the bay while cruising amongst the 144 stunning islands.

### INCLUDES:

- Guaranteed dolphin or whale sightings
- Experienced crew
- Informative commentary

**Departs:** Daily from Pahia Wharf B at 9am, 1:30pm, Russell Wharf at 9:10am, 1:40pm

**Returns:** Pahia Wharf B at 1pm, 5:30pm, Russell Wharf at 1:10pm, 5:40pm

### PRICE PER PERSON:

	1 APR – 30 SEP 11	1 OCT 11 – 31 MAR 12
Adult	\$70	\$75
Child 5-15 years	\$35	\$39

DOLPHIN DISCOVERIES – EXPLORE NZ

DOLBO1

## Dolphin Eco Encounter



Cruise the Bay of Islands and experience a once in a lifetime opportunity to swim with the dolphins. The bay offers the warmest waters in New Zealand for swimming and has the presence of dolphins all year round.

Travel fast by a water-jet powered catamaran, the ideal vessel for dolphin viewing with large deck areas and plenty of room to move around. Not only will you experience dolphins in their natural environment but you may also witness orcas, whales, seals, penguins and other wildlife. Both morning and afternoon half day tours are available.

### INCLUDES:

- Swimming with dolphins
- Experienced and knowledgeable crew
- Full commentary
- Use of snorkelling equipment
- Tea and coffee

**Departs:** Daily from Paihia Wharf at 8am, 12:30pm, Russell Wharf at 8:10am, 12:40pm

**Returns:** Paihia Wharf at 12pm, 4:30pm  
Russell Wharf at 12:10pm, 4:40pm

PRICE:	1 APR – 30 SEP 11	1 OCT 11 – 31 MAR 12
Adult	\$96	\$98
Child 5-14 years	\$60	\$61

FULLERS GREAT SIGHTS BAY OF ISLANDS

FULBO1

## R. Tucker Thompson Tall Ship Sailing



The best way to see the Bay of Islands is from the water on board a tall ship. The R. Tucker Thompson is spacious, with plenty of room to relax, read a book and soak up the sun. For something more energetic, help set the sails, ride the bowsprit or swing off the rope for a swim. At lunchtime head ashore, have a swim or enjoy a drink on board. The late afternoon sail is perfect for a unique tall ship experience on limited time. The trip is a relaxing sail through to the township of Opuia.

### FULL DAY SAIL INCLUDES:

- Island shore visit
- Morning tea
- Barbecue lunch
- Return ferry transfers from Paihia to Russell Wharf

### AFTERNOON SAIL INCLUDES:

- Light snacks
- Ferry transfer from Paihia to Russell Wharf
- Coach drop-off from Opuia to Paihia

**Departs:** From Russell Wharf (1 – 26 Apr, 1 Nov 11 – 31 Mar 12)  
Full Day Sail: Daily at 10am, pick up from Paihia at 9:30am  
Afternoon Sail: Wed, Fri, Sun at 4pm, pick up from Paihia at 3:30pm

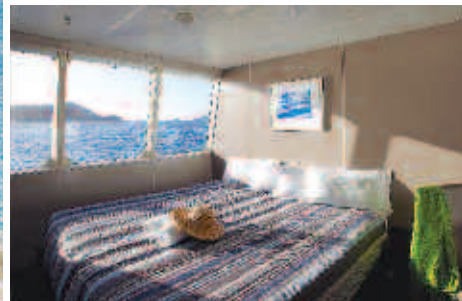
**Returns:** Full Day Sail: Russell Wharf at 3:30pm, Paihia at 4pm  
Afternoon Sail: Opuia Wharf at 5:45pm, Paihia at 6pm

PRICE:	AFTERNOON SAIL		FULL DAY SAIL	
	1 APR – 30 SEP 11	1 OCT 11 – 31 MAR 12	1 APR – 30 SEP 11	1 OCT 11 – 31 MAR 12
Adult	\$49	\$54	\$109	\$114
Child 5-12 years	\$24	\$31	\$54	\$57

R. TUCKER THOMPSON

RTTB01

## Overnight Bay of Islands Cruise



Cruise through the breathtaking and historical region of the Bay of Islands. Travel to Te Tai Tokerau, the birthplace of New Zealand and witness the historical and cultural path from the arrival of Maori and Europeans to the region, to the signing of the Treaty of Waitangi in 1840 between Maori and the British Crown. With 144 islands, the Bay of Islands is a natural wonderland where you can encounter Bottlenose and Common dolphins, whales, seals, penguins and a diverse variety of birdlife. Relax on the sundeck and take in the unforgettable views, or take part in the many activities on offer including kayaking, snorkelling tours and beach walks. Do as much or as little as you like.

At night, enjoy a buffet dinner featuring local and traditional dishes, as well as New Zealand wines. After a cooked breakfast the next morning, unwind while cruising past the spectacular scenery back to the mainland.

### INCLUDES:

- 1 nights accommodation with private facilities on board Ipiriri
- Buffet dinner
- Cooked breakfast
- All day water, tea and coffee
- Kayak tour
- Use of snorkelling equipment
- Return transfers from Paihia accommodation

**Departs:** Daily from Paihia at 1pm, Opuia Wharf at 1:30pm  
**Returns:** Opuia Wharf at 10am, Paihia at 10:30am

PRICE PER PERSON:	1 APR – 31 MAY, 1 SEP 11 – 31 JAN 12	1 FEB – 31 MAR 12
	Adult twin share	\$281
Adult sole use	\$422	\$444
Child 5-14 years	\$141	\$148

Prices from Auckland also available.

GREAT SIGHTS NEW ZEALAND

GRENZL

# Tours from Northland and Bay of Islands

## Cape Reinga via Ninety Mile Beach



Journey to the top of the North Island – Cape Reinga and uncover the wild beauty of a vast and untouched region that is rich in Maori culture and tradition. Visit the ancient Puketi Kauri forest, with a 20 minute boardwalk past 1,000 year old Kauri trees.

On arrival at Cape Reinga, stand on the windswept tip of New Zealand and watch the Pacific Ocean collide with the Tasman Sea. Try sand boarding down the massive sand dunes at Te Paki Stream. Feel the sand between your toes whilst digging for shellfish on Ninety Mile Beach (conditions permitting).

**INCLUDES:**

- Puketi Kauri Forest
- Sand boarding at Te Paki Stream
- Barbecue lunch (optional extra)
- Full commentary
- Return transfers from Paihia and Kerikeri accommodation

**Departs:** Daily from Paihia at 7am, Kerikeri at 7:50am

**Returns:** Kerikeri at 5:45pm, Paihia at 6:15pm

PRICE:	NO LUNCH	WITH LUNCH
Adult	\$98	\$118
Child 5-14 years	\$49	\$67

Ferry transfers from Russell also available.

FULLERS GREAT SIGHTS BAY OF ISLANDS FULB01

## Dune Rider – Cape Reinga via Ninety Mile Beach



Absorb yourself in the culture and history of the far north area, while taking in the amazing scenery. See giant swamp kauri, spiritual Cape Reinga, drive along Ninety Mile Beach and sand board down massive sand dunes!

The unique Dune Rider vehicle travels north to the Gumdigger's Park, where an ancient Kauri forest was buried thousands of years ago, and then on to the famous Ninety Mile Beach. Enjoy breathtaking views that go on forever as you drive along this 'Highway of the North'. Climb giant sand dunes at the Te Paki stream and toboggan back down. Arriving at Cape Reinga, enjoy magnificent sweeping views where the Tasman Sea and the Pacific Ocean meet.

**INCLUDES:**

- Entry to Gumdigger's Park
- Informative commentary
- Boxed lunch
- Purpose built off-road air-conditioned vehicle with reclining seats
- Return transfers from Paihia or Kerikeri accommodation

**Departs:** Daily from Paihia at 7:30am, Kerikeri at 7:45am

**Returns:** Kerikeri at 6pm, Pahia at 6:15pm

PRICE:	1 APR – 30 SEP 11	1 OCT 11 – 31 MAR 12
Adult	\$110	\$114
Child 5-15 years	\$86	\$87

Ferry transfers from Russell also available.

DUNE RIDER 4X4 TOURS – EXPLORE NZ DUNB01

## Cape Reinga Fly Drive Tour



Salt Air's all inclusive tour is a great way to experience Cape Reinga. Depart Kerikeri airport in a modern aircraft, where each passenger has their own window seat. Friendly pilots chat along the way about local history and points of interest.

Fly up the west coast, with low level views of the world famous Ninety Mile Beach before landing at a private airfield near the Cape. Here you are met by the comfortable air-conditioned vehicle for a two hour 30 minute guided ground tour exploring the top of New Zealand including Cape Reinga lighthouse where the two oceans meet and Te Paki Sand Dunes for some sand tobogganing fun. Fly down Northland's spectacular east coast via the Bay of Islands viewing this stunning coastline much of which is untouched and not accessible by road.

**INCLUDES:**

- Return scenic flights to Cape Reinga
- 2 hour 30 minute ground tour
- Morning or afternoon tea
- Return transfers from Opuia, Paihia or Waitangi accommodation

**Departs:** Daily from Kerikeri Airport at 9:30am (1 Apr – 25 Oct 11), 8:30am, 1:30pm (26 Oct 11 – 31 Mar 12)

**Returns:** 1:50pm (1 Apr – 25 Oct 11)  
12:50pm, 5:50pm (26 Oct 11 – 31 Mar 12)

PRICE:	
Adult	\$335
Child 5-14 years	\$335

Prices from Auckland also available.

SALT AIR SAIB01

## Night Show, Waitangi Treaty House



Shrouded by the beauty of the Waitangi Treaty Grounds, the carved Maori house is a meeting house for people by day and a theatre by night.

A contemporary production combining drama, music and dance, the show relates the traditional story of how two cultures, Maori and European, settled in New Zealand.

Enjoy an authentic Maori welcome and then the re-enactment of the story of the two cultures' forefathers. Be moved by the dramatic lighting, the powerful and intelligently written script, and uplifting music and song.

After the show, meet and mingle with the cast and hear their own stories.

**INCLUDES:**

- 1 hour 30 minute show
- After show meet and greet
- Return transfers from Paihia accommodation

**Departs:** From Paihia at 7:30pm  
Mon, Wed, Thu, Sat (Apr, Oct – Jan),  
Mon to Sat (Feb – Mar)

**Returns:** 9:30pm

PRICE:	
Adult	\$51
Child 5-16 years	\$25

CULTURE NORTH CULB01