



Canterbury Plains

Our Favourites

Go whale and dolphin watching at Kaikoura

Visit the International Antarctic Centre

Visit the French village of Akaroa and take a harbour cruise

Visit wineries in the Waipara Valley

Canterbury is a region of contrasts. Rugged alps sit alongside flat green plains, silvery Pacific Ocean beaches lie next to the magnificent Kaikoura Ranges and fresh blue lakes are framed by golden tussock. Step off the plane in Christchurch and straight into all that Canterbury has to offer. You'll be spoilt for choice no matter what's on your holiday menu.

Tour the Alpine Pacific Triangle, taking you to the gourmet area of Waipara, the spa delights of Hanmer Springs and the whales and dolphins of the eco-tourism destination, Kaikoura.

Situated between the Canterbury Plains and the West Coast, in the heart of the Southern Alps is Arthur's Pass National Park. Discover it by road, hiking on foot or take the TranzAlpine train journey, either way you won't be disappointed.

A little further south, follow the Inland Scenic Route 72 for beautiful vistas of the Canterbury Plains on one side of the road and fabulous views of the mountains on the other. The welcoming town of Methven is a base for skiing adventures in winter and at other times jet boating, sky diving, fishing and golf take over. In Ashburton, the museums and art and craft galleries will keep you occupied for hours.

English influence is all around in Christchurch, with lush gardens, expansive parks and the Avon River winding its way around the city. Take a journey on the gondola high above the city and delight in the truly awe-inspiring views of the Canterbury Plains, Southern Alps and Banks Peninsula.

For lasting memories, head out to Banks Peninsula for the day. Discover the historic French influenced village of Akaroa. Enjoy a harbour cruise and see the rare Hector's dolphin, seals and penguins up close or visit a French café before taking a stroll around local art and craft boutiques.

FIND YOUR ACCOMMODATION

CANTERBURY

| REF. | APARTMENTS | PAGE |
|------|-----------------------------------------------------|------|
| 7 | Bella Vista Ashburton ★★★★★☆ | 60 |
| 6 | Brinkley Resort, Methven ★★★★★ | 59 |
| 4 | The Bruce Apartments, Akaroa ◆◆◆◆◆ | 58 |
| 1 | Kaikoura Waterfront Apartments ◆◆◆◆◆ | 56 |
| 6 | Ski Time Lodge, Methven ◆◆◆◆◆ | 59 |
| 5 | Terrace Downs Resort, Canterbury High Country ◆◆◆◆◆ | 59 |
| 4 | Tresori Motor Lodge, Akaroa ◆◆◆◆◆ | 58 |

| REF. | HOTELS | PAGE |
|------|-------------------------------------------------------------|------|
| 2 | Albergo Hanmer Lodge and Alpine Villa, Hanmer Springs ◆◆◆◆◆ | 57 |
| 3 | Claremont Country Estate, Waipara Gorge ★★★★★ | 58 |
| 1 | Hapuku Lodge, Kaikoura ★★★★★ | 56 |
| 2 | Heritage Hanmer Springs ★★★★★☆ | 57 |
| 7 | Hotel Ashburton ★★★☆ | 60 |
| 1 | Lemon Tree Lodge Kaikoura ◆◆◆◆◆ | 56 |
| 2 | Select Braemar Lodge and Spa, Hanmer Springs ◆◆◆◆◆ | 57 |
| 2 | Tussock Peak Motor Lodge, Hanmer Springs ★★★★★☆ | 57 |
| 1 | The White Morph Inn, Kaikoura ★★★★★ | 56 |
| 4 | Wilderness House, Akaroa ◆◆◆◆◆ | 58 |

CHRISTCHURCH

| REF. | APARTMENTS | PAGE |
|------|------------------------------------------------|------|
| 10 | Peppers Cleanwater Resort, Christchurch ★★★★★☆ | 61 |

| REF. | HOTELS | PAGE |
|------|---------------------------------------------|------|
| 12 | Charlotte Jane, Christchurch ★★★★★ | 62 |
| 8 | The Chateau on the Park, Christchurch ◆◆◆◆◆ | 61 |
| 11 | The George, Christchurch ★★★★★ | 62 |
| 17 | Ibis Christchurch ★★★ | 60 |
| 16 | The Marque Hotel Christchurch ◆◆◆◆◆ | 61 |
| 15 | Novotel Christchurch Cathedral Square ◆◆◆◆◆ | 61 |
| 14 | Rydges Christchurch ★★★★★☆ | 62 |
| 9 | Sudima Hotel Christchurch Airport ★★★★★☆ | 60 |
| 13 | Terra Vive Luxury Motel, Christchurch ◆◆◆◆◆ | 62 |



Kaikoura Waterfront Apartments ◆◆◆◆



2 BRM EXECUTIVE

Spacious apartments located across from the beach, close to cafés, shopping and Kaikoura's famous water activities.

Beach 20m
Town Centre 500m
Map page 55 Ref. 1

126 Esplanade, Kaikoura

PROPERTY FEATURES:

- Guest laundry ▪ DVD library
- Parking ▪ Non smoking

ACCOMMODATION FEATURES:

- Fan ▪ Balcony or patio
- Kitchen with microwave and dishwasher
- Spa bath (2 Bedroom Executives)
- Cable TV ▪ CD/DVD player
- Internet access (wireless)
- 2 bathrooms
- Ironing facilities
- Laundry ▪ Hair dryer

Apartment serviced daily



From **\$197** PER ROOM PER NIGHT*

| 1 - 30 APR 11 | ADULTS | 1 NT | 3 NTS | 5 NTS |
|-----------------------------|--------|------|-------|-------|
| 1 Bedroom Courtyard/Balcony | 1 to 2 | 217 | 650 | 1084 |
| 2 Bedroom Courtyard/Balcony | 1 to 4 | 262 | 785 | 1308 |
| 2 Bedroom Executive | 1 to 4 | 308 | 922 | 1537 |
| 1 MAY - 15 AUG 11 | ADULTS | 1 NT | 3 NTS | 5 NTS |
| 1 Bedroom Courtyard/Balcony | 1 to 2 | 197 | 589 | 981 |
| 2 Bedroom Courtyard/Balcony | 1 to 4 | 217 | 650 | 1084 |
| 2 Bedroom Executive | 1 to 4 | 277 | 830 | 1383 |
| 16 AUG 11 - 31 MAR 12 | ADULTS | 1 NT | 3 NTS | 5 NTS |
| 1 Bedroom Courtyard | 1 to 2 | 226 | 676 | 1127 |
| 1 Bedroom Balcony | 1 to 2 | 243 | 728 | 1214 |
| 2 Bedroom Courtyard | 1 to 4 | 265 | 795 | 1324 |
| 2 Bedroom Balcony | 1 to 4 | 283 | 847 | 1411 |
| 2 Bedroom Executive | 1 to 4 | 334 | 1000 | 1667 |

Children 0 to 1 years – cot/bed charge payable direct.
2 to 14 years – adult prices apply.

Max capacity 1 Bedrooms – 2, 2 Bedrooms – 6.

KAIKBZ

Lemon Tree Lodge Kaikoura ◆◆◆◆



OCEAN VIEW ROOM

Boutique B&B accommodation set on limestone cliffs, looking out to the ocean and mountain ranges.

Beach 2km
Town Centre 550m
Map page 55 Ref. 1

31 Adelphi Terrace, Kaikoura

PROPERTY FEATURES:

- Spa
- Sundeck
- DVD library
- Internet access (wireless)
- Non smoking

ACCOMMODATION FEATURES:

- Balcony or patio
- Tea/coffee making facilities
- Mini bar ▪ Refrigerator
- In-room movies (free)
- CD/DVD player ▪ Hair dryer

Room serviced daily



From **\$129** PER ROOM PER NIGHT*

| 1 SEP 11 - 31 MAR 12 | ADULTS | 1 NT | 3 NTS | 5 NTS |
|-------------------------------|--------|------|-------|-------|
| Garden Room | 1 | 129 | 386 | 643 |
| | 2 | 138 | 414 | 690 |
| Ocean View Room | 1 | 158 | 473 | 788 |
| | 2 | 182 | 546 | 910 |
| Garden Suite | 1 to 2 | 197 | 591 | 985 |
| Ocean View Ground Floor Suite | 1 to 2 | 247 | 740 | 1233 |

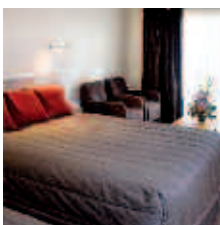
Lodge is closed 1 Apr – 31 Aug 11.

Children 0 to 15 years – not catered for.

Max capacity 2.

LEMKBZ

The White Morph Inn ★★★★★



A relaxing and quiet waterfront property, offering quality, stylish accommodation and a fine dining experience.

Beach 20m
Town Centre 400m
Map page 55 Ref. 1

92 Esplanade, Kaikoura

PROPERTY FEATURES:

- Restaurant ▪ Café ▪ Bar
- Room service (limited) ▪ Barbecue area
- Internet access (wireless)
- Non smoking ▪ Steam room

ACCOMMODATION FEATURES:

- Balcony or patio ▪ Mini bar
- Ocean views (Luxury Spa rooms)
- Limited cooking facilities with microwave
- Spa bath (Luxury Spa rooms)
- Laundry

Room serviced daily

Luxury Spa ★★★★★



From **\$139** PER ROOM PER NIGHT*

| 1 MAY - 31 AUG 11 | ADULTS | 1 NT | 3 NTS | 5 NTS |
|------------------------|--------|------|-------|-------|
| Standard Garden Studio | 1 to 2 | 139 | 416 | 694 |
| Superior | 1 to 2 | 162 | 485 | 808 |
| Standard 2 Bedroom | 1 to 4 | 205 | 613 | 1021 |
| Luxury Spa | 1 to 2 | 225 | 674 | 1123 |
| 1 SEP 11 - 31 MAR 12 | ADULTS | 1 NT | 3 NTS | 5 NTS |
| Standard Garden Studio | 1 to 2 | 158 | 473 | 788 |
| Superior | 1 to 2 | 178 | 532 | 887 |
| Standard 2 Bedroom | 1 to 4 | 218 | 653 | 1088 |
| Luxury Spa | 1 to 2 | 258 | 773 | 1289 |

Other prices apply 1 - 30 Apr 11.

Children 0 to 12 years – adult prices apply.

Standard Garden Studio: 1 child free when sharing with 2 adults and using existing bedding.

Max capacity Standard Garden Studio – 3, Superior/Luxury Spa – 2, Standard 2 Bedroom – 5.

TWMKBZ

Hapuku Lodge ★★★★★



TREE HOUSE

A contemporary country lodge and tree houses nestled between the Kaikoura Seaward Mountain Range and famed Mangamaunu Bay.

Town Centre 12km
Map page 55 Ref. 1

State Highway 1 at Station Road, Kaikoura

PROPERTY FEATURES:

- Restaurant
- Pool (heated)
- Sauna
- Gymnasium
- Bicycles

ACCOMMODATION FEATURES:

- Mountain and ocean views
- Spa bath (Tree Houses)
- CD/DVD player (Tree Houses)
- iPod docking station
- Internet access (wireless – free)

Room serviced daily

From **\$354** PER ROOM PER NIGHT*

| 1 APR - 30 SEP 11 | ADULTS | 1 NT | 3 NTS | 5 NTS |
|-------------------------|--------|------|-------|-------|
| Lodge Room | 1 to 2 | 445 | 1334 | 2222 |
| Hapuku Room/Lodge Suite | 1 to 2 | 626 | 1877 | 3128 |
| Upper Branch Tree House | 1 to 2 | 635 | 1903 | 3172 |
| 1 OCT 11 - 31 MAR 12 | ADULTS | 1 NT | 3 NTS | 5 NTS |
| Lodge Room | 1 to 2 | 445 | 1334 | 2222 |
| Hapuku Room/Lodge Suite | 1 to 2 | 626 | 1877 | 3128 |
| Upper Branch Tree House | 1 to 2 | 635 | 1903 | 3172 |

2 night minimum stay applies 24 - 26 Dec, 31 Dec 11 - 1 Jan 12.
In-house dinner must be booked if stay includes 25 Dec 11 or 31 Dec 11, payable direct. Family Tree House prices also available.

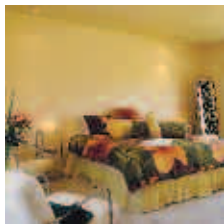
Includes Full breakfast daily.

Children 0 to 12 years – prices on application.

Max capacity Lodge Room/Upper Branch Tree House – 2, Hapuku Room/Lodge Suite – 3.

HAPKBZ

Albergo Hanmer Lodge & Alpine Villa, Hanmer Springs ◆◆◆◆◆



Nestled in North Canterbury's spectacular Alpine Triangle, with alpine views and a perfect fusion of Swiss and New Zealand hospitality.

Town Centre 2km
Map page 65 Ref. 2

88 Rippingale Road, Hanmer Springs

PROPERTY FEATURES:

- Massage and spa treatment facilities
- Barbecue area ▪ Sundeck
- Children's playground
- Internet access (wireless)
- Guest lounge ▪ Non smoking

ACCOMMODATION FEATURES:

- Air-conditioning ▪ Patio ▪ Spa (Villa)
- Tea/coffee making facilities
- Microwave ▪ Kitchen (Cottage and Villa)
- CD/DVD player ▪ Laundry
- Bathrobes ▪ Hair dryer

Mini service daily



From **\$190** PER ROOM PER NIGHT*

| 1 MAY – 1 SEP 11 | ADULTS | 1 NT | 3 NTS | 5 NTS |
|----------------------|--------|------|-------|-------|
| Lodge Suite | 2 | 190 | 568 | 946 |
| Deluxe Spa Room | 2 | 205 | 615 | 1025 |
| Alpine Cottage | 2 | 260 | 780 | 1300 |
| Alpine Spa Villa | 2 | 363 | 1088 | 1813 |
| 2 SEP 11 – 31 MAR 12 | ADULTS | 1 NT | 3 NTS | 5 NTS |
| Lodge Suite | 2 | 213 | 639 | 1064 |
| Deluxe Spa Room | 2 | 221 | 662 | 1103 |
| Alpine Cottage | 2 | 308 | 922 | 1537 |
| Alpine Spa Villa | 2 | 410 | 1230 | 2049 |

Other prices apply 1 – 30 Apr 11.

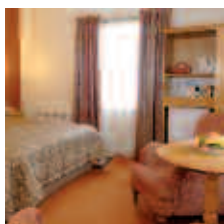
Includes Full breakfast daily.

Children 0 to 4 years – cot/bed charge payable direct.
5 to 12 years – \$40 per child per night.

Max capacity Lodge Suite/Deluxe Spa Room – 2 adults/1 child,
Alpine Cottage – 6, Alpine Spa Villa – 4.

ALBHAN

Heritage Hanmer Springs ★★★★★



A superb 1930's spa lodge, now a modern hotel with landscaped gardens and a short walk to Hanmer Springs Thermal reserve.

Town Centre 10m
Map page 55 Ref. 2

1 Conical Hill Road, Hanmer Springs

PROPERTY FEATURES:

- 24 hour reception ▪ Restaurant
- Bar ▪ Room service (24 hour)
- Pool ▪ Tennis court ▪ Guest laundry
- Fireplace ▪ Internet access (wireless)
- Parking ▪ Non smoking

ACCOMMODATION FEATURES:

- Balcony and patio (3 Bedroom Villas)
- Fan ▪ Fireplace (3 Bedroom Villas)
- Mini bar ▪ Kitchen (3 Bedroom Villas)
- Tea/coffee making facilities ▪ Cable TV
- iPod docking station ▪ Laundry

Room serviced daily



From **\$148** PER ROOM PER NIGHT*

| 1 APR – 30 SEP 11 | ADULTS | 1 NT | 3 NTS | 5 NTS |
|----------------------|--------|------|-------|-------|
| Superior | 1 to 2 | 148 | 442 | 737 |
| Deluxe | 1 to 2 | 164 | 492 | 820 |
| Garden Deluxe | 1 to 2 | 173 | 518 | 863 |
| 3 Bedroom Villa | 1 to 6 | 263 | 788 | 1312 |
| 1 OCT 11 – 31 MAR 12 | ADULTS | 1 NT | 3 NTS | 5 NTS |
| Superior | 1 to 2 | 164 | 490 | 816 |
| Deluxe | 1 to 2 | 178 | 532 | 887 |
| Garden Deluxe | 1 to 2 | 186 | 556 | 926 |
| 3 Bedroom Villa | 1 to 6 | 263 | 788 | 1312 |

Children 0 to 13 years – up to 2 children free when sharing with 2 adults and using existing bedding. Cot free of charge.

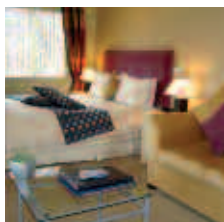
Max capacity Superior – 2, Deluxe/Garden Deluxe – 4,
3 Bedroom Villa – 6.

HERHAN

TRAVELPOINT BONUS

FREE upgrade to the next room type for stays of 2 nights or more (subject to availability).

Tussock Peak Motor Lodge, Hanmer Springs ★★★★★



Centrally located only a two minute walk to the famous hot pools, cafés and shopping boutiques the village has to offer.

Town Centre 500m
Map page 55 Ref. 2

2 Leamington Street, Hanmer Springs

PROPERTY FEATURES:

- DVD library ▪ Guest laundry
- Internet access (wireless)
- Parking ▪ Non smoking

ACCOMMODATION FEATURES:

- Fan ▪ Balcony or patio
- Spa bath (corner)
- Limited cooking facilities
- Cable TV ▪ CD/DVD player
- Internet access (wireless)
- Laundry ▪ Hair dryer
- All rooms non smoking

Room serviced daily



From **\$153** PER ROOM PER NIGHT*

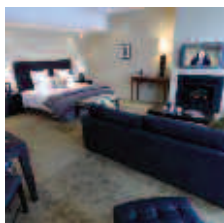
| 1 APR – 15 AUG 11 | ADULTS | 1 NT | 3 NTS | 5 NTS |
|-----------------------|--------|------|-------|-------|
| Studio | 1 to 2 | 153 | 459 | 765 |
| 1 Bedroom | 1 to 2 | 158 | 473 | 788 |
| Executive Studio Spa | 1 to 2 | 163 | 487 | 812 |
| 2 Bedroom | 1 to 4 | 217 | 650 | 1084 |
| 16 AUG 11 – 31 MAR 12 | ADULTS | 1 NT | 3 NTS | 5 NTS |
| Studio | 1 to 2 | 160 | 480 | 800 |
| 1 Bedroom | 1 to 2 | 177 | 530 | 883 |
| Executive Studio Spa | 1 to 2 | 177 | 530 | 883 |
| 2 Bedroom | 1 to 4 | 238 | 712 | 1186 |

Children 0 to 1 years – cot/bed charge payable direct.
2 to 4 years – adult prices apply.

Max capacity Studio/1 Bedroom/Executive Studio Spa – 3,
2 Bedroom – 6.

TUSHAN

Select Braemar Lodge and Spa, Hanmer Springs ◆◆◆◆◆



Located at the foothills of the Southern Alps, these stylish suites offer unrivalled views across the Hanmer Basin and mountains.

Town Centre 10km
Map page 55 Ref. 2

283 Medway Road, Hanmer Springs

PROPERTY FEATURES:

- Day spa ▪ Restaurant ▪ Bar
- Room service (limited) ▪ Guest lounge
- Internet access (wireless – free)
- Gymnasium ▪ Parking ▪ Non smoking

ACCOMMODATION FEATURES:

- Air-conditioning ▪ Balcony ▪ Cable TV
- Tea/coffee making facilities ▪ Mini bar
- Spa bath ▪ Double vichy shower
- Internet access (wireless) ▪ CD player
- Hot tub on balcony (Spas, Medway Spa and Deluxe Spa Suites)
- Fireplace ▪ Ironing facilities ▪ Hair dryer

Room serviced daily



From **\$237** PER ROOM PER NIGHT*

| 1 APR 11 – 31 MAR 12 | ADULTS | 1 NT | 3 NTS | 5 NTS |
|----------------------|--------|------|-------|-------|
| Suite | 1 to 2 | 237 | 710 | 1182 |
| Medway Suite | 1 to 2 | 268 | 804 | 1340 |
| Spa Suite | 1 to 2 | 284 | 851 | 1419 |
| Medway Spa Suite | 1 to 2 | 339 | 1017 | 1694 |
| Deluxe Spa Suite | 1 to 2 | 359 | 1076 | 1793 |

2 night minimum stay applies when stay includes any New Zealand public holiday. Braemar Suite prices also available.

Children 0 to 11 years – free when sharing with an adult and using existing bedding.

Max capacity 2.

BRAHAN

Waipara and Akaroa

Claremont Country Estate, Waipara Gorge ★★★★★



LILY SUITE

A deluxe historic country homestead offering a variety of activities; nestled below the Southern Alps in the heart of wine country.

Waipara 24km
Map page 55 Ref. 3

828 Ram Paddock Road, RD2 Amberley, North Canterbury

PROPERTY FEATURES:

- Fireplace ■ Guest lounge ■ Bicycles
- Tennis court ■ Non smoking
- Internet access (wireless – free)
- Nature reserve ■ Swimming holes
- Horse riding and fishing (extra charge)

ACCOMMODATION FEATURES:

- Spa bath (Retreat) ■ Bathrobes
- Kitchen with microwave and dishwasher (except Suites)
- CD/DVD player (except Suites)
- Laundry (except Suites)

Room serviced daily



From \$762 PER ROOM PER NIGHT*

| | ADULTS | 1 NT | 2 NTS | 5 NTS |
|---------------------------------------------------------------|--------|------|-------|-------|
| 1 – 30 APR, 1 OCT – 24 DEC, 27 – 30 DEC 11, 2 JAN – 31 MAR 12 | | | | |
| Lily Suite/Fountain Suite | 2 | 762 | 1524 | 3810 |
| Owners Retreat/Claremont Cottage | 1 to 2 | N/A | 1524 | 3810 |

2 night minimum stay applies 24 Dec 11 – 3 Jan 12. Other prices apply 25 – 26 Dec, 31 Dec 11 – 1 Jan 12. Property is closed 1 May – 30 Sep 11. Other room types also available.

Includes Fully breakfast daily (Suites) or breakfast provisions (Retreat/Cottage), afternoon tea, wine and cheese daily and fruit basket on arrival.

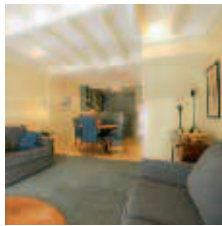
Children 0 to 13 years – catered for in Claremont Cottage only, prices on application.

Max capacity Suites – 2, Retreat – 4, Cottage – 2 adults/3 children. **CLAWAP**

TRAVELPOINT BONUS

FREE bottle of Waipara wine. FREE picnic lunch for 2 people on one day for stays of 2 nights or more and a FREE guided 4WD tour for stays of 3 nights or more.

The Bruce Apartments, Akaroa ◆◆◆◆◆



Water facing apartments located just metres from a variety of cafés and bars of the enchanting village of Akaroa.

Town Centre 100m
Map page 55 Ref. 4

Corner Rue Jolie and Church Street, Akaroa

PROPERTY FEATURES:

- Guest laundry
- Parking
- Non smoking

ACCOMMODATION FEATURES:

- Water views ■ Fan
- Balcony
- Kitchen with microwave and dishwasher
- CD/DVD player
- 2 bathrooms
- Laundry
- Ironing facilities
- Hair dryer

Apartment serviced daily

From \$202 PER ROOM PER NIGHT*

| | ADULTS | 1 NT | 3 NTS | 5 NTS |
|---------------|--------|------|-------|-------|
| 1 – 30 APR 11 | | | | |
| 2 Bedroom | 1 to 4 | 252 | 754 | 1257 |

| | ADULTS | 1 NT | 3 NTS | 5 NTS |
|-------------------|--------|------|-------|-------|
| 1 MAY – 15 AUG 11 | | | | |
| 2 Bedroom | 1 to 4 | 202 | 606 | 1009 |

| | ADULTS | 1 NT | 3 NTS | 5 NTS |
|-----------------------|--------|------|-------|-------|
| 16 AUG 11 – 31 MAR 12 | | | | |
| 2 Bedroom | 1 to 4 | 255 | 764 | 1273 |

Children 0 to 1 years – cot/bed charge payable direct. 2 to 14 years – adult prices apply.

Max capacity 5.

BRUAKA

Tresori Motor Lodge, Akaroa ◆◆◆◆◆



Spacious accommodation in the heart of Akaroa, within 50 metres of waterfront, shops and restaurants.

Town Centre 500m
Map page 55 Ref. 4

128 Rue Jolie Street, Akaroa

PROPERTY FEATURES:

- Spa ■ DVD library
- Guest laundry ■ Parking

ACCOMMODATION FEATURES:

- Spa bath
- Limited cooking facilities with microwave
- Internet access (broadband)
- CD/DVD player
- Cable TV ■ Hair dryer
- Ironing facilities
- All rooms non smoking

Apartment serviced daily



From \$123 PER ROOM PER NIGHT*

| | ADULTS | 1 NT | 3 NTS | 5 NTS |
|---------------|--------|------|-------|-------|
| 1 – 30 APR 11 | | | | |
| Studio | 1 to 2 | 149 | 445 | 741 |
| Studio Spa | 1 to 2 | 173 | 518 | 863 |
| 1 Bedroom | 1 to 3 | 173 | 518 | 863 |
| 2 Bedroom | 1 to 5 | 227 | 681 | 1135 |

| | ADULTS | 1 NT | 3 NTS | 5 NTS |
|-------------------|--------|------|-------|-------|
| 1 MAY – 15 AUG 11 | | | | |
| Studio | 1 to 2 | 123 | 369 | 615 |
| Studio Spa | 1 to 2 | 138 | 414 | 690 |
| 1 Bedroom | 1 to 3 | 149 | 445 | 741 |
| 2 Bedroom | 1 to 5 | 208 | 622 | 1037 |

| | ADULTS | 1 NT | 3 NTS | 5 NTS |
|-----------------------|--------|------|-------|-------|
| 16 AUG 11 – 31 MAR 12 | | | | |
| Studio | 1 to 2 | 159 | 476 | 792 |
| Studio Spa | 1 to 2 | 182 | 544 | 907 |
| 1 Bedroom | 1 to 3 | 193 | 577 | 962 |
| 2 Bedroom | 1 to 5 | 249 | 747 | 1245 |

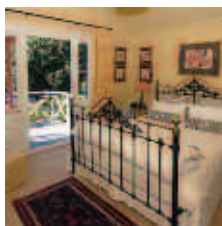
Executive Spa Studio prices also available.

Children 0 to 1 years – cot/bed charge payable direct. 2 to 14 years – adult prices apply.

Max capacity Studio/Studio Spa – 2, 1 Brm – 3, 2 Brm – 5.

TREAKA

Wilderness House, Akaroa ◆◆◆◆◆



A fully hosted gracious and elegant historic home set on one acre of gardens, featuring exquisitely decorated rooms and linens.

Town Centre 1km
Map page 55 Ref. 4

42 Rue Grehan, Akaroa

PROPERTY FEATURES:

- Guest lounge
- Library
- Internet access (wireless – free)
- Private vineyard
- Extensive gardens
- Laundry service
- Non smoking

ACCOMMODATION FEATURES:

- Harbour and valley views
- Tea/coffee making facilities
- Electric blankets
- Bathrobes
- Hair dryer

Room serviced daily

From \$233 PER ROOM PER NIGHT*

| | ADULTS | 1 NT | 3 NTS | 5 NTS |
|----------------------|--------|------|-------|-------|
| 1 APR 11 – 31 MAR 12 | | | | |
| Standard | 1 to 2 | 233 | 698 | 1163 |

Includes Full breakfast daily.

Children 0 to 13 years – not catered for.

Max capacity 2.

WILAKA

Terrace Downs Resort, Canterbury High Country ◆◆◆◆◆



Coleridge Road, Windwhistle

Perched on the edge of the spectacular Rakaia River, Terrace Downs Resort boasts stunning views up to Mount Hutt and is within close proximity to various ski fields. Catering to guests of all ages the resort features deluxe accommodation, three on-site dining options and a selection of leisure and adventure activities to choose from.

Test your golfing skills on the resort's championship 18 hole golf course or play tennis on the sheltered courts. For adventure seekers take a jet boat ride along the beautiful Rakaia River or in winter the ski fields are within close proximity. For a change of pace, indulge in a boutique spa experience and escape the daily stresses of urban life with unique Asian style massage therapy, designed to truly relax and rejuvenate mind, body and soul.

Other activities include horse treks, hiking, clay pigeon shooting and archery through to salmon and trout fishing off the beautiful river shores.

At Terrace Downs you can do as much as you want or as little as you want. The ever-changing landscape acts as the perfect playground for everyone and makes Terrace Downs an exciting and memorable all-season High Country leisure retreat.

PROPERTY FEATURES:

- Day spa ▪ Golf course (18 hole) ▪ Restaurants (3)
- Bars (2) ▪ Tennis courts (2) ▪ Room service (limited)
- Bicycle hire ▪ Croquet ▪ Walking tracks
- Internet access (wireless) ▪ Parking (undercover)

ACCOMMODATION FEATURES:

- Air-conditioning ▪ Balcony or patio ▪ Fireplace
- Spa bath (corner) ▪ Cable TV ▪ CD/DVD player
- Kitchen with microwave and dishwasher
- Bathrobes ▪ Washer/dryer

Apartment serviced daily

Shop 20km
Map page 55 Ref. 5



| | ADULTS | 1 NT | 3 NTS | 6 NTS |
|------------------------------------------------------|--------|------|-------|-------|
| 1 – 19 APR, 27 APR – 19 DEC 11, 1 JAN – 31 MAR 12 | | | | |
| 1 Bedroom Villa Suite | 1 to 2 | 300 | 899 | 1497 |
| 2 Bedroom Villa Suite | 1 to 4 | 416 | 1246 | 2076 |
| 3 Bedroom Villa Suite | 1 to 6 | 483 | 1449 | 2415 |

Other prices apply 20 – 26 Apr, 20 – 31 Dec 11. Room and Breakfast, Half Board and Full Board prices also available.

Children 0 to 11 years – free when sharing with an adult and using existing bedding. Cot free of charge.

Max capacity 1 Bedroom Villa Suite – 2,
2 Bedroom Villa Suite – 4,
3 Bedroom Villa Suite – 6.

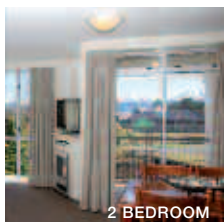
TERCAN

TRAVELPOINT BONUS

FREE Night Offer: Stay 6 nights, pay for 5.
(6 night price includes 1 free night)

FREE Night Offer: Stay 11 nights, pay for 9 and receive a FREE 30 minute spa treatment per person.

Brinkley Resort, Methven ★★★★★



43 Barkers Road, Methven

PROPERTY FEATURES:

- Restaurant ▪ Bar ▪ Barbecue area
- Spas (2) ▪ Tennis court ▪ Non smoking
- Children's playground ▪ DVD library
- Internet access (wireless) ▪ Fireplace

ACCOMMODATION FEATURES:

- Balcony ▪ iPod docking station
- Limited cooking facilities with microwave (Studios) ▪ Ironing facilities
- Kitchen with microwave and dishwasher (2 Bedrooms)
- Cable TV ▪ Internet access (wireless)
- Spa bath (2 Bedrooms)

Apartment service weekly



A high country resort nestled in the foothills of majestic Mount Hutt featuring modern self-contained apartments.

Town Centre 500m
Map page 55 Ref. 6

From \$132 PER ROOM PER NIGHT*

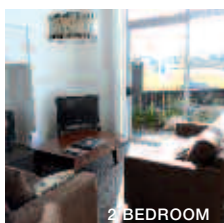
| | ADULTS | 1 NT | 3 NTS | 5 NTS |
|----------------------|--------|------|-------|-------|
| 1 APR 11 – 31 MAR 12 | | | | |
| Studio | 1 to 2 | 132 | 395 | 658 |
| 2 Bedroom | 1 to 4 | 216 | 646 | 1076 |
| 3 Bedroom | 1 to 6 | 347 | 1040 | 1734 |

Children 0 to 12 years – free when sharing with an adult and using existing bedding. Cot free of charge.

Max capacity Studio – 2, 2 Bedroom – 4, 3 Bedroom – 6.

BRICAN

Ski Time Lodge, Apartments & Restaurant, Methven ◆◆◆◆◆



43 Racecourse Avenue, Methven

PROPERTY FEATURES:

- Restaurant ▪ Bar
- Guest lounge with tea/coffee making facilities
- Internet access (wireless)
- Games room
- Fireplace ▪ Guest laundry

ACCOMMODATION FEATURES:

- Kitchen with microwave (2 and 3 Brms)
- Cable TV (except Standard rooms)
- CD/DVD player (2 and 3 Brms)
- Laundry (2 and 3 Brms)
- Gas fireplace (2 and 3 Brms)

Room serviced every 2 days

Cosy accommodation, 30 minutes from the Mount Hutt ski area, offering fantastic food and stunning views of the Southern Alps.

Town Centre 1km
Map page 55 Ref. 6

From \$64 PER ROOM PER NIGHT*

| | ADULTS | 1 NT | 3 NTS | 5 NTS |
|-------------------|--------|------|-------|-------|
| 1 APR – 31 MAY 11 | | | | |
| Standard | 1 to 2 | 64 | 190 | 316 |
| Standard Deluxe | 1 to 2 | 95 | 284 | 473 |
| 1 Bedroom Studio | 1 to 2 | 111 | 331 | 552 |
| 2 Bedroom | 1 to 4 | 190 | 568 | 946 |
| 3 Bedroom | 1 to 6 | 276 | 828 | 1379 |
| 1 JUN – 31 OCT 11 | | | | |
| Standard | 1 to 2 | 107 | 320 | 532 |
| Standard Deluxe | 1 to 2 | 138 | 414 | 690 |
| 1 Bedroom Studio | 1 to 2 | 154 | 461 | 769 |
| 2 Bedroom | 1 to 4 | 284 | 851 | 1419 |
| 3 Bedroom | 1 to 6 | 375 | 1123 | 1872 |

Other prices apply 1 Nov 11 – 31 Mar 12.

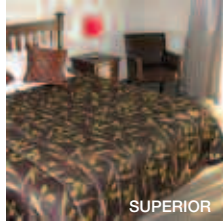
Children 0 to 2 years – cot/bed charge payable direct.
3 to 14 years – adult prices apply.

Max capacity Standard/Standard Deluxe – 3,
1 Bedroom Studio – 2, 2 Bedroom – 4,
3 Bedroom – 6.

SKICAN

Ashburton and Christchurch

Hotel Ashburton ★★★☆



Set on the outskirts of Ashburton, offering the quiet of the countryside, with large beautiful gardens and all modern conveniences.

Town Centre 2km
Map page 55 Ref. 7

11-35 Racecourse Road, Ashburton

PROPERTY FEATURES:

- 24 hour reception
- Restaurant ■ Bars (2)
- Gaming facilities ■ Pool
- Room service (limited) ■ Tennis court
- Internet access (wireless) ■ Parking

ACCOMMODATION FEATURES:

- Balcony (Superior rooms)
- Mini bar
- Limited cooking facilities (Superior rooms)
- Cable TV ■ Internet access (wireless)
- Bath (Superior rooms)

Room serviced daily



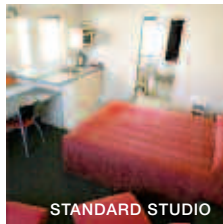
From **\$108** PER ROOM PER NIGHT*

| 1 APR – 30 SEP 11 | ADULTS | 1 NT | 3 NTS | 5 NTS |
|----------------------|--------|------|-------|-------|
| Standard | 1 to 2 | 108 | 322 | 536 |
| Superior | 1 to 2 | 143 | 428 | 713 |
| 1 OCT 11 – 31 MAR 12 | ADULTS | 1 NT | 3 NTS | 5 NTS |
| Standard | 1 to 2 | 121 | 362 | 603 |
| Superior | 1 to 2 | 137 | 409 | 682 |

Children 0 to 12 years – 1 child free when sharing with an adult and using existing bedding.
Max capacity 3 adults or 2 adults/2 children.

HASCAN

Bella Vista Motel Ashburton ★★★☆



Quality accommodation centrally located in Ashburton village, an hour south of Christchurch, just a short walk to cafés and bars.

Town Centre 1km
Map page 55 Ref. 7

469-476 West Street, Ashburton

PROPERTY FEATURES:

- Barbecue area
- Internet access (wireless)
- Guest laundry ■ Non smoking

ACCOMMODATION FEATURES:

- Fan ■ Patio ■ Barbecue
- Tea/coffee making facilities
- Limited cooking facilities (1 Bedrooms)
- Microwave (except Compact Studios)
- Cable TV
- Internet access (broadband)
- Spa bath (1 Bedrooms)
- Ironing facilities
- Hair dryer

Room serviced daily

From **\$83** PER ROOM PER NIGHT*

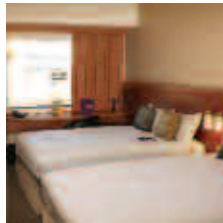
| 1 – 30 APR, 16 AUG 11 – 31 MAR 12 | ADULTS | 1 NT | 3 NTS | 5 NTS |
|-----------------------------------|--------|------|-------|-------|
| Compact Studio | 1 to 2 | 95 | 284 | 473 |
| Standard Studio | 1 to 2 | 112 | 336 | 560 |
| 1 Bedroom | 1 to 2 | 125 | 374 | 623 |
| 1 MAY – 15 AUG 11 | ADULTS | 1 NT | 3 NTS | 5 NTS |
| Compact Studio | 1 to 2 | 83 | 249 | 414 |
| Standard Studio | 1 to 2 | 96 | 286 | 477 |
| 1 Bedroom | 1 to 2 | 112 | 336 | 560 |

Children 0 to 1 years – cot/bed charge payable direct. 2 to 14 years – adult prices apply.

Max capacity Compact Studio – 2, Standard Studio – 3, 1 Bedroom – 4.

BELCAN

Ibis Christchurch ★★★



Superbly situated behind Cathedral Square, surrounded by art galleries, museums, cafés, restaurants and attractions.

Cathedral Square 150m
Map page 55 Ref. 17

107 Hereford Street, Christchurch

PROPERTY FEATURES:

- 24 hour reception
- Restaurant ■ Bar
- Room service (limited)
- Guest laundry ■ Lift

ACCOMMODATION FEATURES:

- Air-conditioning
- Tea/coffee making facilities
- Internet access (wireless)
- Cable TV
- Ironing facilities
- Hair dryer

Room serviced daily



From **\$60** PER ROOM PER NIGHT*

| 1 APR – 30 SEP, 1 DEC 11 – 31 JAN 12 | ADULTS | 1 NT | 2 NTS | 3 NTS |
|--------------------------------------|--------|------|-------|-------|
| Standard | 1 to 2 | 90 | 179 | 268 |
| 1 OCT – 30 NOV 11, 1 FEB – 31 MAR 12 | ADULTS | 1 NT | 2 NTS | 3 NTS |
| Standard | 1 to 2 | 153 | 305 | 457 |

Other prices apply for special events.

Children 0 to 11 years – 1 child free when sharing with an adult and using existing bedding.

Max capacity 3 adults or 2 adults/2 children.

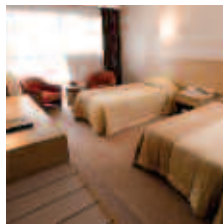
IBICHC

TRAVELPOINT BONUS

FREE Night Offer: Stay 3 nights, pay for 2, valid 1 Apr – 5 May, 8 May – 25 Aug 11.

FREE buffet breakfast for 2 adults daily for stays of 2 nights OR MORE, valid 1 Dec 11 – 31 Jan 12.

Sudima Hotel Christchurch Airport ★★★☆



Ideal for a stopover, located just two minutes drive from Christchurch Airport terminals and close to the Antarctic Centre.

Airport 700m
Cathedral Square 11km
Map page 55 Ref. 9

Cnr Memorial Dr & Orchard Rd, Christchurch

PROPERTY FEATURES:

- 24 hour reception ■ Restaurant
- Bar ■ Room service (24 hour)
- Barbecue area ■ Pool (outdoor)
- Guest lounge ■ Guest laundry
- Internet access (wireless) ■ Non smoking
- Laundry/dry cleaning service
- Courtesy airport transfers

ACCOMMODATION FEATURES:

- Fan ■ Tea/coffee making facilities
- Mini fridge ■ Cable TV ■ Safe
- Ironing facilities ■ Hair dryer

Room serviced daily



From **\$109** PER ROOM PER NIGHT*

| 1 APR – 4 SEP 11 | ADULTS | 1 NT | 3 NTS | 5 NTS |
|-----------------------|--------|------|-------|-------|
| Standard | 1 to 2 | 109 | 327 | 544 |
| Premium | 1 to 2 | 116 | 346 | 576 |
| Premium Bureau | 1 to 2 | 121 | 362 | 603 |
| Premium Family Studio | 1 to 2 | 242 | 726 | 1210 |
| 25 OCT 11 – 31 MAR 12 | ADULTS | 1 NT | 3 NTS | 5 NTS |
| Standard | 1 to 2 | 121 | 362 | 603 |
| Premium | 1 to 2 | 127 | 381 | 635 |
| Premium Bureau | 1 to 2 | 134 | 400 | 666 |
| Premium Family Studio | 1 to 2 | 242 | 726 | 1210 |

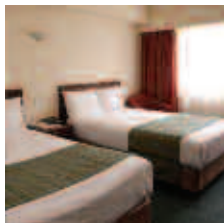
Other prices apply 5 Sep – 24 Oct 11.

Children 0 to 12 years – free when sharing with an adult and using existing bedding. Cot free of charge.

Max capacity Standard – 3, Premium/Premium Bureau – 2, Premium Family Studio – 4.

SUDCHC

The Chateau on the Park ◆◆◆◆



A resort style hotel set on five acres of tranquil gardens and just a 20 minute stroll through Hagley Park to the vibrant city centre of Christchurch.
Cathedral Square 3km
Map page 55 Ref. 8

189 Deans Avenue, Christchurch

PROPERTY FEATURES:

- Linden Leaves Day Spa ▪ Fireplace
- 24 hour reception ▪ Restaurant ▪ Bar
- Room service (24 hour) ▪ Pool (heated)
- Spa ▪ Gymnasium ▪ Non smoking
- Library ▪ Internet access (wireless)
- Laundry/dry cleaning service ▪ Parking
- Courtesy shuttle bus to city (9am – 8pm)

ACCOMMODATION FEATURES:

- Air-conditioning ▪ Cable TV
- Mini bar ▪ Ironing facilities
- In-room movies (pay to view)
- Internet access (wireless – free)

Room serviced daily



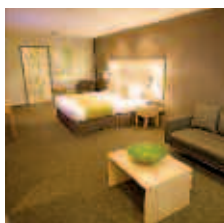
| | | From \$103 PER ROOM PER NIGHT* | | | |
|----------------------------------------------|--------|--------------------------------|-------|-------|--|
| 1 APR – 30 SEP 11 | ADULTS | 1 NT | 3 NTS | 5 NTS | |
| Deluxe | 1 to 2 | 103 | 308 | 513 | |
| Premier | 1 to 2 | 134 | 400 | 666 | |
| Executive Suite | 1 to 2 | 302 | 906 | 1509 | |
| 1 – 31 OCT, 1 DEC 11 – 31 JAN, 1 – 31 MAR 12 | ADULTS | 1 NT | 3 NTS | 5 NTS | |
| Deluxe | 1 to 2 | 134 | 400 | 666 | |
| Premier | 1 to 2 | 164 | 490 | 816 | |
| Executive Suite | 1 to 2 | 302 | 906 | 1509 | |
| 1 – 30 NOV 11, 1 – 28 FEB 12 | ADULTS | 1 NT | 3 NTS | 5 NTS | |
| Deluxe | 1 to 2 | 157 | 471 | 784 | |
| Premier | 1 to 2 | 175 | 525 | 875 | |
| Executive Suite | 1 to 2 | 302 | 906 | 1509 | |

Children 0 to 12 years – free when sharing with an adult and using existing bedding.

Max capacity 3 adults or 2 adults/2 children.

CHACHC

The Marque Hotel Christchurch ◆◆◆◆



Offering breathtaking views and a warm ambience, the centrally located hotel is within an easy stroll to dining, bars and shopping.
Cathedral Square 200m
Map page 55 Ref. 16

166 Gloucester Street, Christchurch

PROPERTY FEATURES:

- 24 hour reception ▪ Restaurant ▪ Bar
- Room service (limited) ▪ Gymnasium
- Sauna ▪ Internet access (wireless – free)
- Laundry/dry cleaning service
- Parking (undercover security)

ACCOMMODATION FEATURES:

- Air-conditioning ▪ Mini bar
- Tea/coffee making facilities ▪ Cable TV
- iPod docking station
- Internet access (broadband – free)
- Safe ▪ Ironing facilities ▪ Hair dryer

Room serviced daily



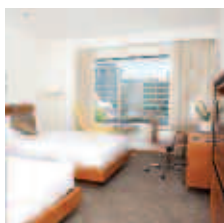
| | | From \$142 PER ROOM PER NIGHT* | | | |
|----------------------|--------|--------------------------------|-------|-------|--|
| 1 APR – 31 AUG 11 | ADULTS | 1 NT | 3 NTS | 5 NTS | |
| Standard | 1 to 2 | 142 | 426 | 710 | |
| Deluxe | 1 to 2 | 164 | 490 | 816 | |
| 1 SEP 11 – 31 MAR 12 | ADULTS | 1 NT | 3 NTS | 5 NTS | |
| Standard | 1 to 2 | 164 | 490 | 816 | |
| Deluxe | 1 to 2 | 184 | 551 | 918 | |

Children 0 to 11 years – free when sharing with an adult and using existing bedding. Cot free of charge.

Max capacity 2.

MARCHC

Novotel Christchurch Cathedral Square ◆◆◆◆◆



A modern hotel tower built alongside a historic heritage-listed building, perfectly located in the heart of Cathedral Square.
Cathedral Square 30m
Map page 55 Ref. 15

50 Cathedral Street, Christchurch

PROPERTY FEATURES:

- Restaurant ▪ Bar ▪ Gymnasium
- Room service (24 hour)
- Internet access (wireless)
- Parking ▪ Non smoking

ACCOMMODATION FEATURES:

- Air-conditioning
- Tea/coffee making facilities
- Mini bar ▪ Cable TV
- In-room movies (pay to view)
- Internet access (wireless)
- Ironing facilities ▪ Hair dryer

Room serviced daily



| | | From \$82 PER ROOM PER NIGHT* | | | |
|-----------------------------------------------------|--------|-------------------------------|-------|-------|--|
| 1 APR – 5 MAY, 8 MAY – 24 SEP, 1 DEC 11 – 31 JAN 12 | ADULTS | 1 NT | 2 NTS | 3 NTS | |
| Novotel Guest/Superior Heritage | 1 to 2 | 123 | 245 | 367 | |
| Executive | 1 to 2 | 161 | 322 | 483 | |
| 25 SEP – 30 NOV 11, 1 FEB – 31 MAR 12 | ADULTS | 1 NT | 2 NTS | 3 NTS | |
| Novotel Guest/Superior Heritage | 1 to 2 | 155 | 309 | 464 | |
| Executive | 1 to 2 | 240 | 480 | 719 | |

Other prices apply 6 – 7 May 11 and special events.

Children 0 to 15 years – up to 2 children free when sharing with 2 adults and using existing bedding.

Max capacity 3 adults or 2 adults/2 children.

NOVCHC

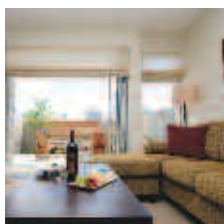
TRAVELPOINT BONUS

FREE Night Offer: Stay 3 nights, pay for 2.

FREE buffet breakfast for 2 adults daily for stays of 2 nights or more.

Offers valid 1 Apr – 5 May, 8 May – 31 Aug 11 and are not combinable.

Peppers Clearwater Resort ★★★★★☆



Contemporary accommodation with a boathouse design set within beautiful grounds surrounded by shimmering lakes.
Christchurch 13km
Map page 55 Ref. 10

Clearwater Avenue, Harewood, Christchurch

PROPERTY FEATURES:

- Golf course (18 hole) ▪ 24 hour reception
- Restaurant ▪ Bar ▪ Tennis court
- Room service (limited) ▪ Barbecue area
- Internet access (wireless) ▪ Parking

ACCOMMODATION FEATURES:

- Kitchen with microwave and dishwasher (Lakeview Suites, Terrace Apts, Quay Villas)
- Limited cooking facilities with microwave and dishwasher (Lakefront Suites)
- Cable TV ▪ Internet access (wireless)
- Washer/dryer ▪ Ironing facilities
- Bathrobes ▪ Hair dryer

Apartment serviced daily



| | | From \$148 PER ROOM PER NIGHT* | | | |
|----------------------------|--------|--------------------------------|-------|-------|--|
| 1 APR – 31 AUG 11 | ADULTS | 1 NT | 3 NTS | 5 NTS | |
| Lakeside Room/Quay Room | 1 to 2 | 174 | 442 | 737 | |
| Lakeview Suite | 1 to 2 | 222 | 587 | 977 | |
| Lakefront Suite/Quay Suite | 1 to 2 | 270 | 731 | 1218 | |
| Lakeside Villa | 1 to 4 | 391 | 1095 | 1824 | |
| Terrace Apartment | 1 to 4 | 439 | 1239 | 2065 | |
| 11 OCT 11 – 31 MAR 12 | ADULTS | 1 NT | 3 NTS | 5 NTS | |
| Lakeside Room/Quay Room | 1 to 2 | 200 | 494 | 824 | |
| Lakeview Suite | 1 to 2 | 248 | 639 | 1064 | |
| Lakefront Suite/Quay Suite | 1 to 2 | 296 | 783 | 1304 | |
| Lakeside Villa | 1 to 4 | 417 | 1147 | 1911 | |
| Terrace Apartment | 1 to 4 | 465 | 1291 | 2151 | |

Other prices apply 1 Sep – 10 Oct 11. Quay Villa prices also available.

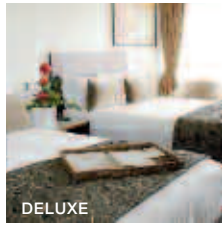
Children 0 to 12 years – free when sharing with an adult and using existing bedding.

Max capacity Lakeside Room/Quay Room/Lakeview Suite/Quay Suite – 2, Lakefront Suite – 3, Lakeside Villa – 5, Terrace Apartment – 4.

PCWCHC

Christchurch

Rydges Christchurch ★★★★★



DELUXE

Contemporary accommodation located adjacent to the Avon River, offering panoramic views of the Southern Alps or Cathedral Square.

Cathedral Square 50m
Map page 55 Ref. 14

170 Oxford Terrace, Christchurch

PROPERTY FEATURES:

- 24 hour reception
- Restaurant ▪ Bar
- Room service (24 hour)
- Gymnasium
- Laundry/dry cleaning service
- Parking ▪ Non smoking

ACCOMMODATION FEATURES:

- Air-conditioning ▪ Mini bar
- In-room movies (pay to view)
- Internet access (broadband)
- Ironing facilities

Room serviced daily



From **\$102** PER ROOM PER NIGHT*

| 1 APR – 31 AUG 11 | ADULTS | 1 NT | 3 NTS | 5 NTS |
|-------------------|--------|------|-------|-------|
| Superior | 1 to 2 | 153 | 305 | 609 |
| Deluxe | 1 to 2 | 176 | 352 | 703 |

| 1 NOV 11 – 31 MAR 12 | ADULTS | 1 NT | 3 NTS | 5 NTS |
|----------------------|--------|------|-------|-------|
| Superior | 1 to 2 | 186 | 372 | 744 |
| Deluxe | 1 to 2 | 202 | 404 | 807 |

Other prices apply 1 Sep – 31 Oct 11. Room and Breakfast prices also available.

Children 0 to 12 years – free when sharing with an adult and using existing bedding. Cot free of charge.

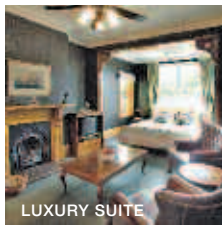
Max capacity 3.

RYDCHC

TRAVELPOINT BONUS

FREE Night Offer: Stay 3 nights, pay for 2.
(3 and 5 night prices include 1 free night)

Charlotte Jane ★★★★★



LUXURY SUITE

Boutique accommodation in a grand Victorian mansion set in beautiful gardens and featuring one of Christchurch's finest restaurants.

Cathedral Square 3km
Map page 55 Ref. 12

110 Papanui Road, Christchurch

PROPERTY FEATURES:

- Restaurant ▪ Bar ▪ Wine cellar
- Room service (limited) ▪ Fireplace
- Library ▪ Massage facilities
- Internet access (wireless – free)
- Laundry/dry cleaning service

ACCOMMODATION FEATURES:

- Air-conditioning ▪ Fan ▪ Fireplace
- Spa bath ▪ Tea/coffee making facilities
- Mini bar ▪ Cable TV ▪ Hair dryer
- Ironing facilities ▪ Bathrobes
- All rooms non smoking

Room serviced daily



From **\$253** PER ROOM PER NIGHT*

| 1 APR – 31 MAY 11 | ADULTS | 1 NT | 3 NTS | 5 NTS |
|------------------------------|--------|------|-------|-------|
| Standard | 1 to 2 | 312 | 934 | 1556 |
| Luxury Room | 1 to 2 | 343 | 1029 | 1714 |
| Luxury Suite/Honeymoon Suite | 1 to 2 | 426 | 1277 | 2128 |

| 1 JUN – 9 SEP 11 | ADULTS | 1 NT | 3 NTS | 5 NTS |
|------------------------------|--------|------|-------|-------|
| Standard | 1 to 2 | 253 | 757 | 1261 |
| Luxury Room | 1 to 2 | 276 | 828 | 1379 |
| Luxury Suite/Honeymoon Suite | 1 to 2 | 355 | 1064 | 1773 |

| 10 OCT – 23 DEC, 26 – 30 DEC 11, 1 JAN – 31 MAR 12 | ADULTS | 1 NT | 3 NTS | 5 NTS |
|----------------------------------------------------|--------|------|-------|-------|
| Standard | 1 to 2 | 355 | 1064 | 1773 |
| Luxury Room | 1 to 2 | 390 | 1170 | 1950 |
| Luxury Suite/Honeymoon Suite | 1 to 2 | 438 | 1312 | 2187 |

Other prices apply 10 Sep – 9 Oct, 24 – 25 Dec, 31 Dec 11.

Includes Full breakfast daily, New Zealand wine and hors d'oeuvres served daily during cocktail hour.

Children 0 to 11 years – \$63 per child per night.

Max capacity 2.

CJACHC

The George ★★★★★



PREMIUM EXECUTIVE

Stylish accommodation nestled beside Hagley Park amidst cultural arts and within walking distance to the city centre.

Cathedral Square 1.5km
Map page 55 Ref. 11

50 Park Terrace, Christchurch

PROPERTY FEATURES:

- 24 hour reception
- Restaurants (2) ▪ Café ▪ Bar
- Room service (24 hour)
- Guest lounge
- Massage facilities ▪ Internet facilities
- Gymnasium (off-site) ▪ Parking
- Dry cleaning service

ACCOMMODATION FEATURES:

- Air-conditioning ▪ Mini bar ▪ Cable TV
- Tea/coffee making facilities
- Spa bath ▪ Ironing facilities
- Hair dryer ▪ All rooms non-smoking

Room serviced daily



From **\$324** PER ROOM PER NIGHT*

| 1 APR – 31 AUG 11 | ADULTS | 1 NT | 3 NTS | 5 NTS |
|-------------------|--------|------|-------|-------|
| Executive | 1 to 2 | 324 | 972 | 1620 |
| Premium Executive | 1 to 2 | 356 | 1066 | 1777 |
| Junior Suite | 1 to 2 | 512 | 1534 | 2557 |
| Residence Suite | 1 to 2 | 619 | 1856 | 3093 |
| Park Suite | 1 to 2 | 735 | 2203 | 3672 |

| 15 OCT 11 – 31 MAR 12 | ADULTS | 1 NT | 3 NTS | 5 NTS |
|-----------------------|--------|------|-------|-------|
| Executive | 1 to 2 | 338 | 1014 | 1690 |
| Premium Executive | 1 to 2 | 370 | 1109 | 1848 |
| Junior Suite | 1 to 2 | 535 | 1603 | 2671 |
| Residence Suite | 1 to 2 | 615 | 1844 | 3073 |
| Park Suite | 1 to 2 | 764 | 2291 | 3818 |

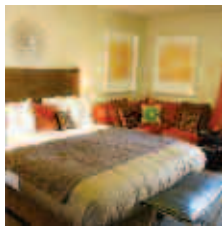
Other prices apply 1 Sep – 14 Oct 11.

Children 0 to 11 years – free when sharing with 2 adults and using existing bedding. Cot free of charge.

Max capacity Executive – 2, Premium Executive – 3 adults or 2 adults/2 children, Junior Suite – 3, Residence Suite/Park Suite – 2 adults/1 child.

GEOCHC

Terra Vive Luxury Motel ◆◆◆◆◆



A centrally located luxury motel that exudes relaxed sophisticated comfort, offering beautifully appointed rooms with large plasma TVs.

Cathedral Square 2km
Map page 55 Ref. 13

175 Bealey Avenue, Christchurch

PROPERTY FEATURES:

- DVD library
- Internet access (wireless)
- Guest laundry
- Parking
- Non smoking

ACCOMMODATION FEATURES:

- Fan ▪ Balcony or patio
- Spa bath (except Shower Studios)
- Tea/coffee making facilities ▪ Microwave
- Limited cooking facilities (2 Bedrooms)
- In-room movies (pay to view)
- CD/DVD player ▪ Washer/dryer
- Ironing facilities ▪ Hair dryer

Room serviced daily

From **\$143** PER ROOM PER NIGHT*

| 1 APR – 15 AUG 11 | ADULTS | 1 NT | 3 NTS | 5 NTS |
|----------------------|--------|------|-------|-------|
| Shower Studio | 1 to 2 | 143 | 428 | 713 |
| Studio | 1 to 2 | 149 | 445 | 741 |
| Executive Spa Studio | 1 to 2 | 163 | 487 | 812 |
| 1 Bedroom | 1 to 2 | 168 | 504 | 840 |
| 2 Bedroom | 1 to 4 | 261 | 783 | 1304 |

| 16 AUG 11 – 31 MAR 12 | ADULTS | 1 NT | 3 NTS | 5 NTS |
|-----------------------|--------|------|-------|-------|
| Studio | 1 to 2 | 158 | 473 | 788 |
| Executive Spa Studio | 1 to 2 | 170 | 509 | 847 |
| 1 Bedroom | 1 to 2 | 181 | 542 | 903 |
| 2 Bedroom | 1 to 4 | 265 | 795 | 1324 |

Children 0 to 1 years – cot/bed charge payable direct. 2 to 14 years – adult prices apply.

Max capacity Studio/Executive Studio – 2, 1 Bedroom – 4, 2 Bedroom – 5.

TERCHC

Maori Tours Kaikoura



Join this Kaikoura Maori family for a half day tour that combines laughter, learning and storytelling with hands on activities and a bushwalk to discover traditional uses of plants and trees as food and medicine.

With more than 800 years of unbroken family history and tradition in Kaikoura, family members will share stories and legends that will connect you to this special place forever. You'll have opportunities to get involved, ask questions and be taught their ways; like weaving with harakeke, the native flax plant and much more.

Be part of a cultural exchange that provides genuine insight into Maori beliefs, spirituality, values and way of life.

INCLUDES:

- Light refreshments
- Small group – maximum 10 passengers
- Department of Conservation fee
- Return transfers from selected Kaikoura accommodation

Departs: Daily from Kaikoura i-SITE Visitor Centre at 9am, 1:30pm

Returns: 12:30pm, 5pm

PRICE:

| | |
|------------------------------------------|------|
| Adult | \$99 |
| Child 3-15 years | \$52 |
| Not suitable for children under 3 years. | |

MAORI TOURS KAIKOURA

MAOKBZ

Whale Watch Kaikoura



Whale Watch is New Zealand's only marine-based whale watching company offering visitors an exciting up close encounter with Giant Sperm whales. Encounter New Zealand fur seals, pods of Dusky dolphins and the endangered Wandering albatross. Depending on the season you may also see migrating Humpback whales, Pilot whales, Blue whales and Southern Right whales. Kaikoura often hosts the world's largest dolphin, the Orca, and is home to the world's smallest and rarest – the Hector's dolphin.

Whale Watch's modern catamarans are designed for whale watching and feature spacious air-conditioned interiors fitted with comfortable seating and large plasma screens displaying marine wildlife animations.

INCLUDES:

- 2 hours on the water
- Informative commentary
- Experienced and knowledgeable guides
- 'World of the Whales' animations screened on board

Departs: Daily from Kaikoura Railway Station at 7:15am, 10am, 12:45pm

Duration: 3 hours 30 minutes

PRICE:

| | 1 APR – 31 AUG 11 | 1 SEP 11 – 31 MAR 12 |
|------------------|-------------------|----------------------|
| Adult | \$114 | \$118 |
| Child 3-15 years | \$47 | \$47 |

WHALE WATCH KAIKOURA

WHAKBZ

Akaroa Harbour Nature Cruise



The historic French village of Akaroa and its spectacular harbour is just a 90 minute drive from Christchurch. Cruise around an extinct volcanic crater and experience majestic scenery and stunning wildlife.

The cruise is packed with highlights including the rare native dolphin, the Hector's dolphin, as well as penguins, sea birds and New Zealand fur seals sunning themselves on the rocks near Seal Bay.

See giant volcanic sea cliffs, hear about Akaroa's fascinating past and stop at Lucas Bay to visit a salmon farm. The Black Cat vessel is both stable and safe and boasts plenty of room for unimpeded viewing and covered seating for shade and shelter.

INCLUDES:

- 2 hour cruise
- Salmon farm visit
- Informative commentary
- Kids activity book
- Tea and coffee

Departs: Daily from Akaroa Wharf at 11am, 1:30pm (Apr, Nov), 1:30pm (May – Oct), 11am, 1:30pm, 3:40pm (Dec – Mar)

Duration: 2 hours

PRICE:

| | |
|------------------|------|
| Adult | \$54 |
| Child 5-15 years | \$20 |

BLACK CAT CRUISES

BLAAKA

Swimming with Dolphins



Akaroa Harbour is the only place where you can get up close and personal to swim with the world's smallest and rarest dolphins – New Zealand's Hector's dolphin.

Just 90 minutes from Christchurch, depart the French inspired seaside village of Akaroa aboard a Black Cat Cruises' safe and comfortable vessel.

A year round unforgettable adventure awaits you, with up to 45 minutes spent in the water with the dolphins. All equipment is provided including wetsuits, masks, snorkels as well as hot showers, hot chocolate and even a dolphin gift pack.

Choose the Dolphin Watch option to see the dolphins, along with other seafaring wildlife from aboard the vessel.

INCLUDES:

- Up to 45 minutes in the water with dolphins (Dolphin Swim)
- Use of wetsuit, mask, snorkel and hot shower (Dolphin Swim)
- Informative commentary by a dolphin guide
- Hot drink
- Dolphin gift pack

Departs: Daily from Akaroa Wharf at 8:30am, 11:30am, 1:30pm (Apr, Oct – Nov, Mar), 11:30am (May – Sep), 6am, 8:30am, 11:30am, 1:30pm, 3:30pm (Dec – Feb)

Duration: 3 hours

PRICE:

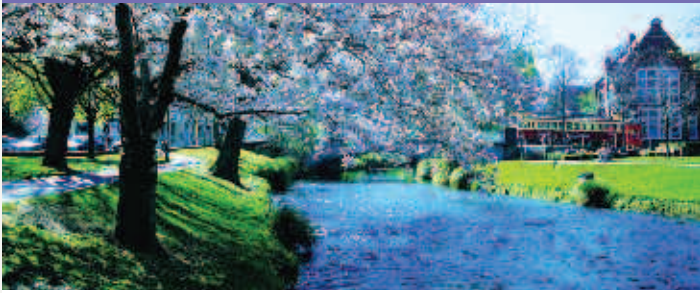
| | DOLPHIN WATCH | | DOLPHIN SWIM |
|------------------|-------------------|----------------------|--------------|
| | 1 APR – 30 SEP 11 | 1 OCT 11 – 31 MAR 12 | |
| Adult | \$57 | \$59 | \$110 |
| Child 5-15 years | \$28 | \$28 | \$91 |

BLACK CAT CRUISES

BLAAKA

Tours from Christchurch

Christchurch City Highlights



Visit the 'Garden City' of Christchurch and witness its European history reflected in its beautiful parks, gardens and squares. See the picturesque Avon River and experience the tranquility of Hagley Park and the Botanic Gardens and other city sights. Head up into the Port Hills for spectacular views over the city and Canterbury Plains before travelling through the historic port of Lyttleton and the seaside suburb of Sumner.

Add on the Gondola or Antarctic Centre option to complete your Christchurch experience. Take a ride on the Christchurch Gondola up to Mt Cavendish and enjoy stunning panoramic views. Or visit the International Antarctic Centre and see Little penguins, have fun in the Snow and Ice Experience or get 'exhilarated' in the Antarctic Storm.

INCLUDES:

- Morning city sights tour with informative commentary
- Return scenic Gondola ride (Gondola option)
- Entry to International Antarctic Centre (Antarctic Centre option)
- Return transfers from selected Christchurch accommodation

Departs: Daily from Christchurch at 9:30am

Returns: City Sights: 12:30pm,
City Sights and Gondola: 1pm
City Sights and Antarctic Centre: 1:30pm

| PRICE: | 1 APR - 31 OCT 11 | | 1 NOV 11 - 31 MAR 12 | |
|----------------------------------|-------------------|------------------|----------------------|------------------|
| | ADULT | CHILD 5-14 YEARS | ADULT | CHILD 5-14 YEARS |
| City Sights | \$48 | \$24 | \$49 | \$25 |
| City Sights and Gondola | \$64 | \$32 | \$65 | \$33 |
| City Sights and Antarctic Centre | \$83 | \$42 | \$86 | \$43 |

GRAY LINE NEW ZEALAND

GRLNZL

Waipara Wine Tour



The Waipara Valley, north of Christchurch, is one of the fastest growing wine producing regions in New Zealand, producing Pinot Noir, Riesling, Chardonnay and Sauvignon Blanc. Discovery Travel's Waipara Wine Tour visits four Waipara wineries such as Pegasus Bay, Mud House, Waipara Springs, Torlesse, Mt Cass, Buddy Water, Greystone or Terrace Edge. The tour includes a large selection of wines for tasting, a delicious winery platter lunch and a guided tour through the region's largest commercial winery and biodiversity trail, to see how and where wine is made.

INCLUDES:

- Wine tastings at four wineries
- Guided winery tour
- Winery lunch platter
- Tea or coffee
- Interesting and informative commentary
- Return transfers from Christchurch accommodation

Departs: Daily from Christchurch at 12 noon

Returns: 5:45pm

| PRICE: | 1 APR - 30 NOV 11 | | 1 DEC 11 - 31 MAR 12 | |
|--------|-------------------|------------------|----------------------|------------------|
| | ADULT | CHILD 3-13 YEARS | ADULT | CHILD 3-13 YEARS |
| Adult | \$91 | \$45 | \$95 | \$48 |

Wine tasting not permitted for children under 18 years.

DISCOVERY TRAVEL

DISCHC

Christchurch to Queenstown via Mount Cook



The majestic beauty of the South Island is a must for any visitor to New Zealand and one of the best ways to view the spectacular scenery is aboard a Great Sights coach. From Christchurch, travel through diverse farmland to Lake Tekapo, where you can view the solitary Church of the Good Shepherd. Continue along the Tasman River before arriving at the location of New Zealand's tallest mountain Aoraki/Mount Cook. There is time to experience an optional scenic helicopter or ski plane flight (weather permitting, extra charge) before departing for New Zealand's adventure capital, Queenstown.

INCLUDES:

- Canterbury Plains
- Lake Tekapo and Church of the Good Shepherd
- Aoraki/Mount Cook
- Mount Cook village
- Lunch (optional extra)
- National park and entry fees
- Pick-up from Christchurch accommodation
- Drop-off to Queenstown accommodation

Departs: Daily from Christchurch at 7:30am

Returns: Queenstown at 6:30pm

| PRICE: | 1 APR - 30 SEP 11 | | 1 OCT 11 - 31 MAR 12 | |
|------------------|-------------------|------------|----------------------|------------|
| | NO LUNCH | WITH LUNCH | NO LUNCH | WITH LUNCH |
| Adult | \$198 | \$237 | \$192 | \$230 |
| Child 3-12 years | \$99 | \$138 | \$96 | \$134 |

GREAT SIGHTS NEW ZEALAND

GRENZL

Kaikoura Whale Watch



Travel from Christchurch through the rolling hill country enjoying the beauty of its pastoral scenes to Kaikoura. Explore this spectacular town where the towering mountain peaks fall into the sea, providing the perfect backdrop for whale watching.

The deep undersea canyons combined with unique sea currents attract an extraordinary array of marine life, including the Sperm whale. Join a 2 hour 30 minute whale watch cruise where you will view Sperm whales and perhaps other whale species, acrobatic dolphins, seals and the Royal albatross.

On your return to Christchurch, stop at a North Canterbury vineyard for wine tasting.

INCLUDES:

- 2 hour 30 minute whale watch cruise
- Wine tasting at a North Canterbury vineyard
- Lunch
- Return transfers from Christchurch accommodation

Departs: Daily from Christchurch at 7:45am

Returns: 7pm

| PRICE: | 1 APR - 31 OCT 11 | | 1 NOV 11 - 31 MAR 12 | |
|--------|-------------------|------------------|----------------------|------------------|
| | ADULT | CHILD 5-14 YEARS | ADULT | CHILD 5-14 YEARS |
| Adult | \$249 | \$125 | \$260 | \$130 |

GRAY LINE NEW ZEALAND

GRLNZL